



FOR THE PERFECT FLOOR

ISSUE EIGHT

News and updates from one of the world's leading manufacturers of high performance flooring products

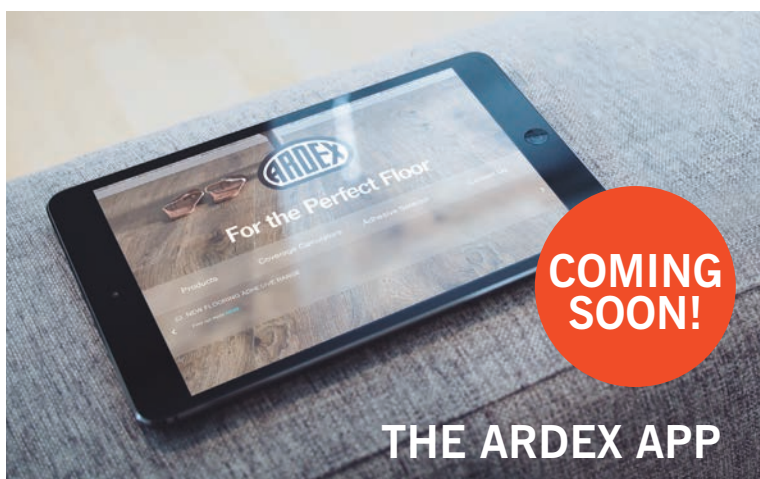


HAVE YOU TRIED ARDEX K 39?

WHAT'S INSIDE...



ARDEX LVT ADHESIVE



**THE BEST OF
SOCIAL MEDIA**



**MEET
THE
TEAM**



ARDEXacademy
TRAINING EXCELLENCE

Register your interest in our Subfloor Preparation
& LVT installation courses

PROUD MEMBERS OF



SUPPORTING THE INDUSTRY

01440 714939

info@ardex.co.uk

www.ardex.co.uk



Follow us on Twitter
@ARDEXUKFlooring



Like us on Facebook
ARDEX UK

ARDEX K 39

**HEAVY DUTY, HIGH FLOW LEVELLING
AND SMOOTHING COMPOUND**

**WET EDGE TIME OF 40 MINUTES • ALLOWS MORE TIME
BETWEEN MIXES • ELIMINATES JOINT MARKS**



- Extended working time of 40 minutes
- Superior flow and finish, with minimum effort
- Eliminates trowel marks
- Walkable in 2 hours



**SEEING IS
BELIEVING!**

View our ARDEX K 39
application video online at
www.ardex.co.uk

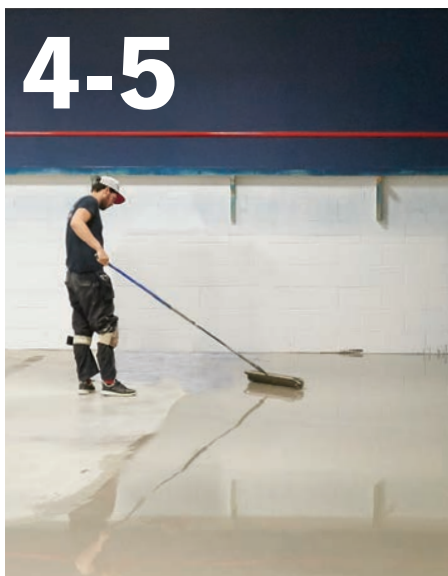
ABOUT ARDEX

Our company's heritage dates back more than 60 years, and as a global manufacturer of high performance building products, ARDEX has remained at the forefront of the UK flooring industry.



CONTENTS THIS ISSUE

4-5



ARDEX Case Study

6-7



LVT Adhesive

8-9



ARDEX Training

11



Meet the Team

11



The NEW ARDEX APP

12-13



HOME BARGAINS, SUFFOLK

Haverhill lies on the border of Suffolk, Essex and Cambridgeshire and is the fastest growing town in the region. As part of a £5m investment to the new retail park, Mike Burris Flooring Ltd had to complete a fast turnaround for a newly built 1,300m² Home Bargains store.

Mike Burris commented 'Completing the job on time was crucial, so our team needed a reliable system of products that allowed the floor to be ready for the next set of contractors.'

Moisture Controlled

Ian Lawton, an ARDEX Technical Service Representative, attended the site and performed a moisture test on the floor. Ian commented 'The test identified the floor had a high moisture content so I recommended the use of an ARDEX Damp Proof Membrane. This would protect the final floorcovering from rising damp and residual construction moisture.'

Amazing Performance

Due to the large area that needed to be smoothed, Mike Burris Flooring covered 40 meter lengths of floor at a time, by pumping ARDEX K 39.

ARDEX K 39 was ideal for this project, as its extended wet edge time meant fresh applications of ARDEX K 39 could be easily smoothed into existing, pre-applied material up to 40 minutes

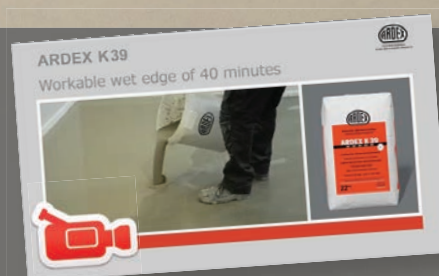
after application, achieving the best possible finish, with minimum effort.

Working Alone?

ARDEX K 39 is also ideal if you're working on your own. It's extended wet edge time gives you more time between mixes, helping you to create the perfect floor, with no patching or rubbing down the next day.

SEEING IS BELIEVING!

View our ARDEX K 39
application video online at www.ardex.co.uk



HAVE YOU TRIED THE LATEST INNOVATION IN FLOOR LEVELLING, ARDEX K 39?

WIN AN ARDEX K 39 FLOORLAYERS KIT!

THE KIT INCLUDES

- ARDEX MIXING BUCKET
- ARDEX MEASURING BUCKET
- SPIRAL WHISK
- ARDEX A2 ADHESIVE TROWEL
- ARDEX T-SHIRT

'We really appreciated the support the ARDEX technical service department provided and the amazing performance of ARDEX K 39! We couldn't believe the working time of the product'



Products used:

- **ARDEX DPM 1 C**
One Coat Surface Damp Proof Membrane
- **ARDEX P4 Primer**
Ready Mixed Rapid Drying Multi-Purpose Primer
- **ARDEX K 39**
Extended Workability, High Flow Levelling and Smoothing Compound

For your chance to win, simply tweet or email a picture of you using ARDEX K 39.

 **#ARDEXKIT**

 **info@ardex.co.uk**

We'll pick 5 entries at the end of July, so there's plenty of time to enter.

ADVANCED FIBRE
REINFORCED
TECHNOLOGY FOR
ADDED BENEFITS.



- Minimises lateral movement during installation
- Eliminates adhesive squeeze between tiles and planks
 - Improved indentation resistance

LUXURY VINYL TILE ADHESIVE



- Install tiles and planks after just 5 minutes
- Walk on after 2 hours
- High temperature resistance, suitable for use over underfloor heating systems
- Solvent free
- Covers up to 56m²

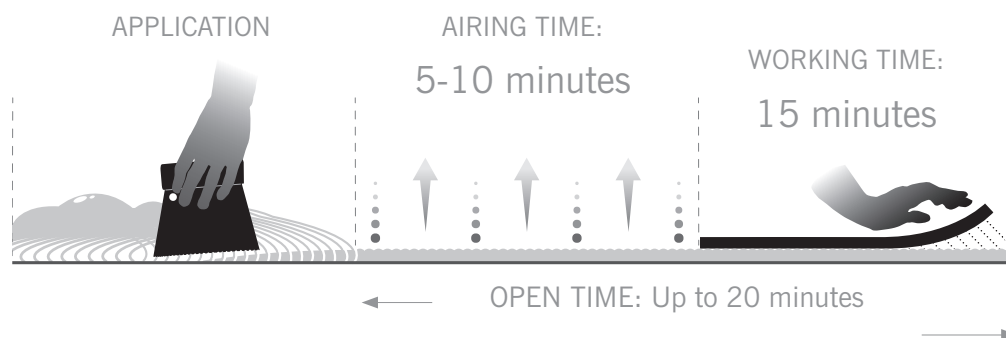


ARDEX Flooring Adhesives meet the requirement guidelines for the EMICODE licence, achieving the lowest possible, or very low emission limits.

Suitable for:

- ✓ Luxury Vinyl Tiles
- ✓ Cushioned Vinyl
- ✓ Vinyl Composition Tiles

INSTALLATION SCHEDULE



Times dependent on the absorbency of the subfloor and site conditions.

LEGEND

AIRING TIME

The time the adhesive must be left open before applying the floorcovering.

WORKING TIME

The time in which the adhesive can receive the floorcovering, after the initial airing time.

OPEN TIME

The combination of airing and working time.



ARDEX are offering you the chance to attend a **FREE** one-day **Luxury Vinyl Tile installation course**.

The course will take place at our recently refurbished academy in Haverhill, Suffolk, and will appeal to new and experienced installers alike.

The course will include:

- **Moisture testing**
- **Moisture Control Systems**
- **Smoothing and Levelling Compounds**
- **Repair Mortars**
- **Luxury Vinyl Tile Installation**
- **Marking out, straight lay and border work**
- **Adhesive selection**



Refreshments, lunch and product samples are all included free of charge.

2018 COURSE DATES

31st July	TIME
23rd August	09.00 - 15.00
20th September	
23rd October	
20th November	

ARDEXacademy
TRAINING EXCELLENCE

Places are limited to the first 20 respondents and for further information, or to register your interest, please contact the ARDEX Customer Service Department on **01440 714939**

Upcoming Training Events from ARDEX



Accrington & Rossendale College
Floorcovering Department
Hameldon Building, Broad Oak Road,
Accrington, Lancashire BB5 2AW

Subfloor Preparation, Repair, Smoothing and Finishing

9.30am – 14.00pm

Wednesday 27th June 2018



Coleg Cambria
Bersham Road
Wrexham
LL13 7UH

Subfloor Preparation, Repair, Smoothing and Finishing

9.30am – 14.00pm

Friday 8th June 2018
Friday 27th July 2018



To book your place please contact the ARDEX Customer Service Department on
01440 714939 or email **info@ardex.co.uk**

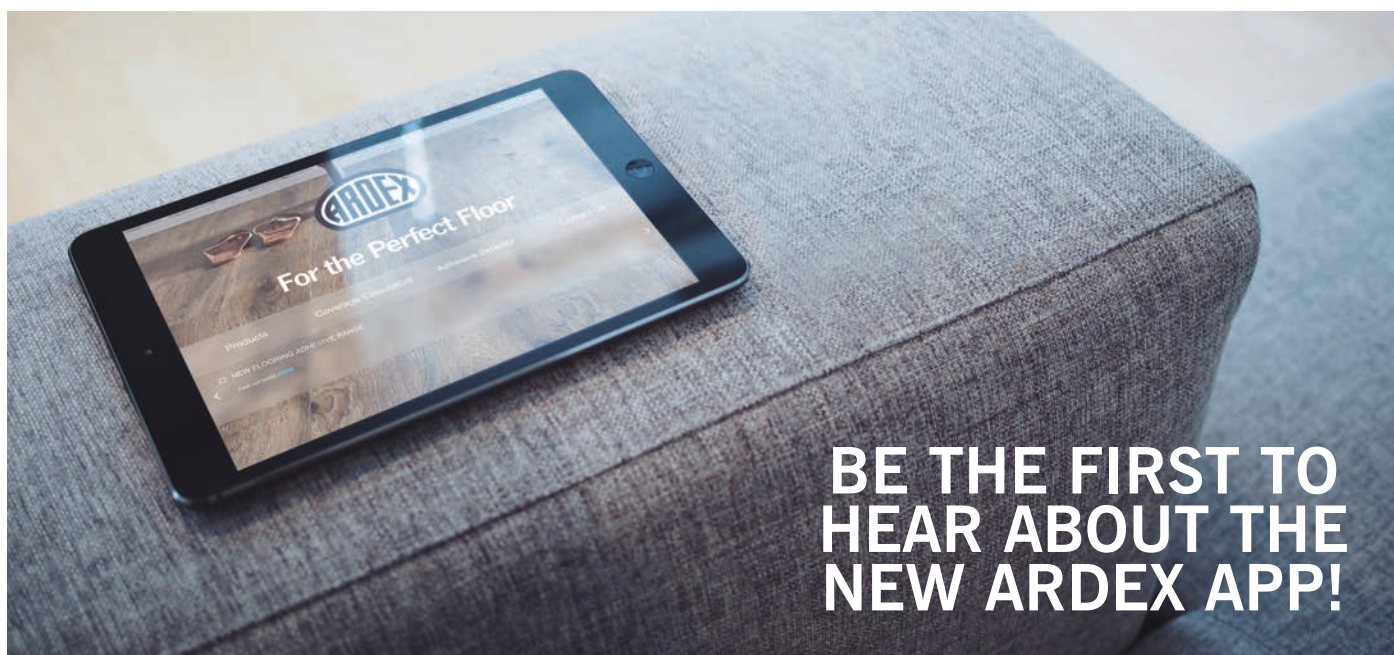
Palette

floor bars



by
lifestyle
FLOORS

★★★★★ 'Palette is revolutionary.' - Glen Simms, Coastal Carpets of Marske.
Available from your Lifestyle Floors Distributor.



**BE THE FIRST TO
HEAR ABOUT THE
NEW ARDEX APP!**

The ARDEX App
will be available
to download
soon!

The app can be used on smartphones and tablet devices, and is supported on Android, Windows and Apple.

The App will allow you to view information on the ARDEX products ideal for the installation of LVT, calculate the amount of product you'll need for a job, and select the most appropriate floorcovering adhesive.

Simply email info@ardex.co.uk to register your interest now, and you'll be the first to hear about the App when it's launched.

MEET THE TEAM

Steve Davies - ARDEX Contracts Manager



After completing an apprenticeship in Floor Laying & Ceramic Tiling, Steve went on to become a self-employed installer, fitting all types of floorcoverings. After more than 25 years working on sites across Shropshire, Cheshire and Wales, Steve was given the opportunity to set up and run a floorcovering installation course, at a local college.

Within his role Steve qualified as a teacher in 2008 and gained;

- Level 3 Award in Management and Learning
- NVQ Level 2 & 3 Assessor Award in Floorcoverings
- IQA Award and many more...

Steve commented; 'Teaching students was one of the greatest experiences of my life; watching young people coming into college fresh and open minded, and then being able to leave and confidently install floors.'

Steve joined ARDEX UK in 2014 as one of our Contracts Managers, and he has continued his passion for teaching; training over 6,000 professional installers throughout the construction industry at distributor events, training colleges and at our purpose-built training academy in Haverhill, Suffolk.

THE BEST OF SOCIAL MEDIA

The ARDEX Facebook and Twitter pages are a great way to keep up to date with the latest news from ARDEX. Remember to include @ARDEXUKFlooring in any of your posts, and we'll always try to retweet any projects you share which include ARDEX products.

If you're not already doing so, please like our Facebook page, ARDEX UK, or follow @ARDEXUKFlooring on Twitter.

Here are some of the posts we have recently shared.

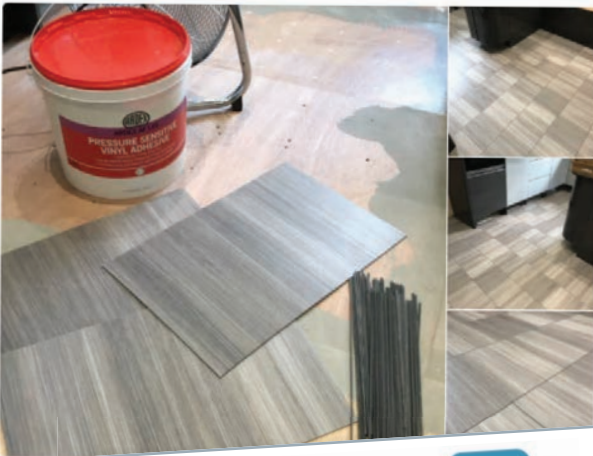




akky
@akky893

Following

Kitchen floor finished with Amtico Spacia Mirus Feather/Stria Volcanic design strips. Installed with @ARDEXUKFlooring feather finish & pressure adhesive



Arbons Flooring
@ArbonsFlooring

Following

ARDEX K39. @ARDEXCPDAcademy
@ARDEXUK it's very nice 🙌



Daz
@reclipsflooring

Following

@ARDEXUKFlooring simply the best 👍 K39 smoothing compound just flows to well.
#glass #smooth #easy life



UNLIMITED flooring sheffield
@unlimitedfloors

Following

Enjoying a sunny Friday install with @PolyflorLtd camaro and @ARDEXUKFlooring NA screeds and A175 adhesive, for a local client #easyfriday #flooring #residential



Shane Moore
@Solutions_floor

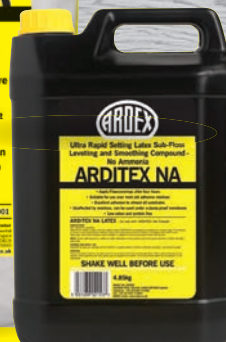
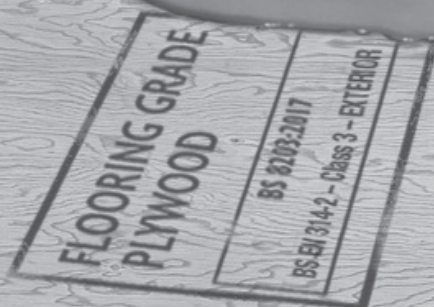
Following

So we have done a nice 80m2 in total of @luvantoflooring black ash on @ARDEXUKFlooring K39 with P51 in a handy 1kg tub, and AF175. All a perfect combination even down to my lunch break @UfitDrinks #flooringsolutions @thenicf @fita_training @kent #lvt #nicf



ARDITEX NA

USE WITH CONFIDENCE DIRECT TO
FLOORING GRADE PLYWOOD



SUPPORTING THE INDUSTRY

the original yellow bag®

HAVE YOU GOT YOUR ESSENTIALS?

The Original and
Market Leading
Fast Track Repair
Products



KEY CONTACTS

For more information on ARDEX products please speak to your local flooring distributor, or ARDEX Area Sales Manager.

• MORRIS PATE SCOTLAND

07860 528824

• JOHN GLEDHILL CLEVELAND, DURHAM, CUMBRIA, TYNE & WEAR, NORTHUMBERLAND

07860 528827

• KEVIN GALE YORKSHIRE, HUMBERSIDE, NORTH LINCOLNSHIRE

07860 528829

• DAVID CLAY CHESHIRE, MERSEYSIDE, GREATER MANCHESTER, LANCASHIRE, CLWYD, GWYNEDD

07860 528825

• JONATHAN ARDLEY BUCKINGHAMSHIRE, CAMBRIDGESHIRE, NORFOLK, SUFFOLK, BEDFORDSHIRE, NORTHAMPTONSHIRE

07977 412477

• RICKY McNAMARA NOTTINGHAMSHIRE, DERBYSHIRE, STAFFORDSHIRE, SHROPSHIRE, HEREFORDSHIRE, WORCESTERSHIRE, WARWICKSHIRE, LEICESTERSHIRE, WEST MIDLANDS, POWYS

07966 646232

• JOHN OLIVER ESSEX, HERTFORDSHIRE, MIDDLESEX, NORTH EAST LONDON

07860 440725

• GLEN SELL KENT, SUSSEX, SOUTH EAST LONDON

07966 646233

• DAVID PETLEY WEST BERKSHIRE, MIDDLESEX, SURREY, HAMPSHIRE, DORSET, SOUTH WEST LONDON, CHANNEL ISLANDS

07836 258087

• RICHARD MARDEN OXFORDSHIRE, EAST BERKSHIRE, GLOUCESTERSHIRE, AVON, CORNWALL, DEVON, SOMERSET, WILTSHIRE, GWENT, GLAMORGAN, DYFED

07860 528823



ARDEX CONTRACT MANAGERS

STEVE DAVIES

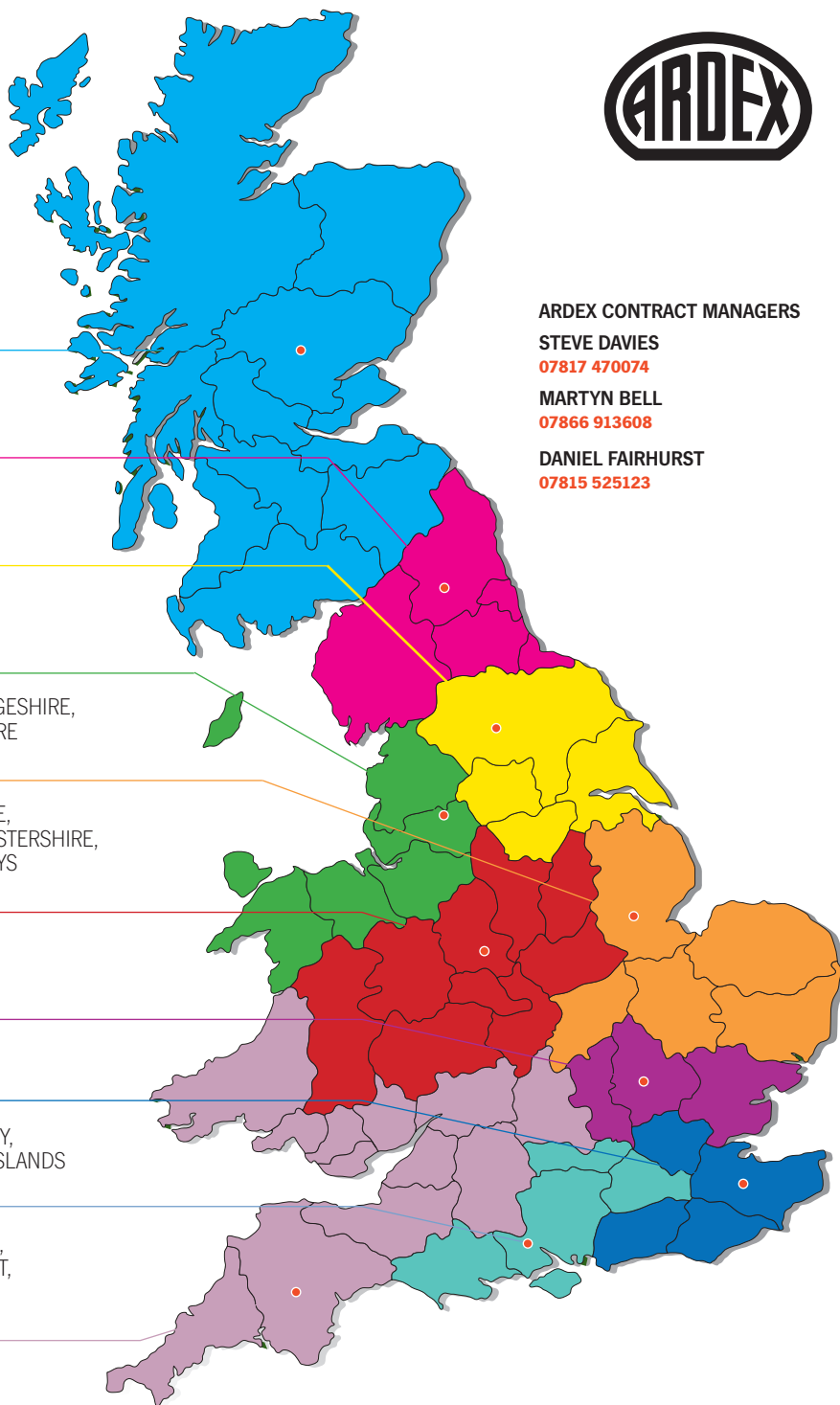
07817 470074

MARTYN BELL

07866 913608

DANIEL FAIRHURST

07815 525123



Technical Advice: technical_admin@ardex.co.uk

Customer Services: **01440 714939**

Sales Office: **01440 714939**

For the latest information on all ARDEX products including technical data sheets, health and safety data sheets and product coverage calculators, please visit the ARDEX website at **www.ardex.co.uk**