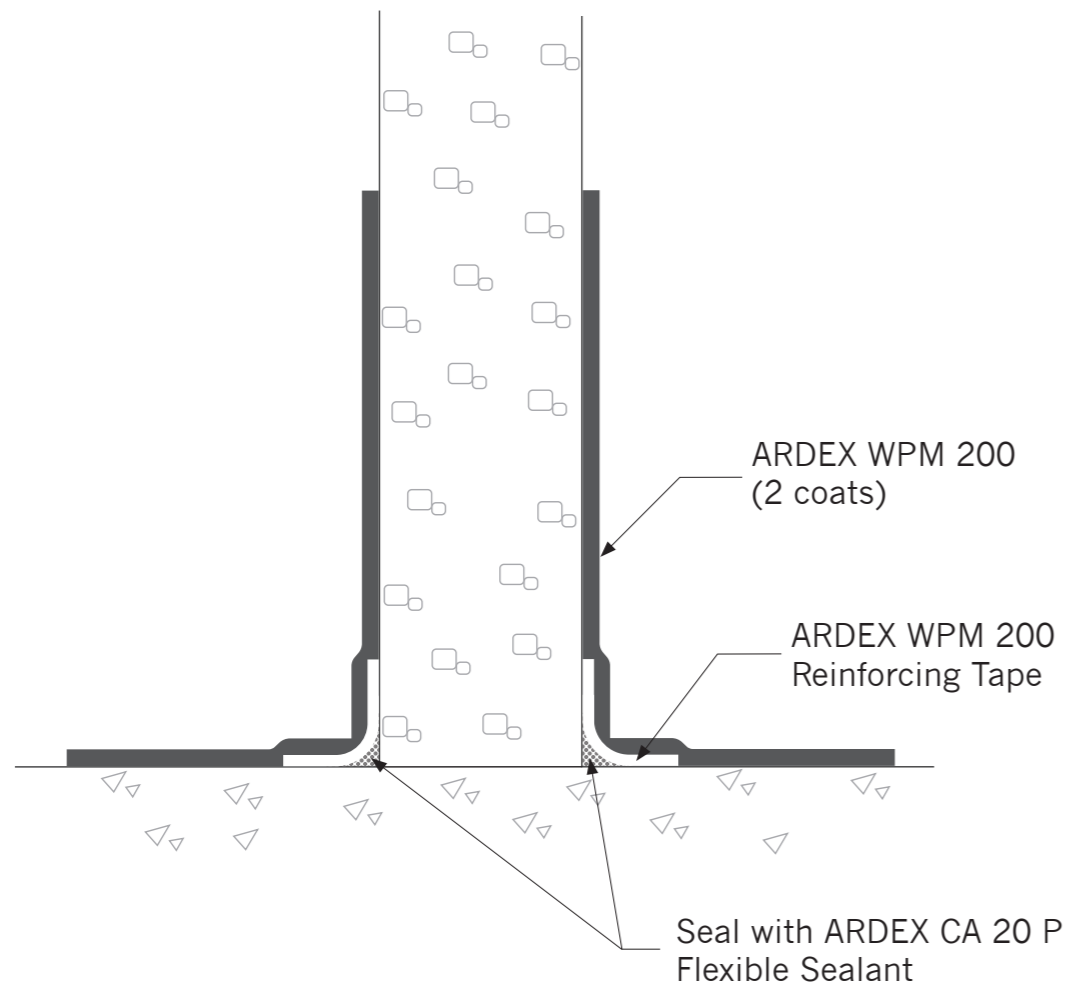


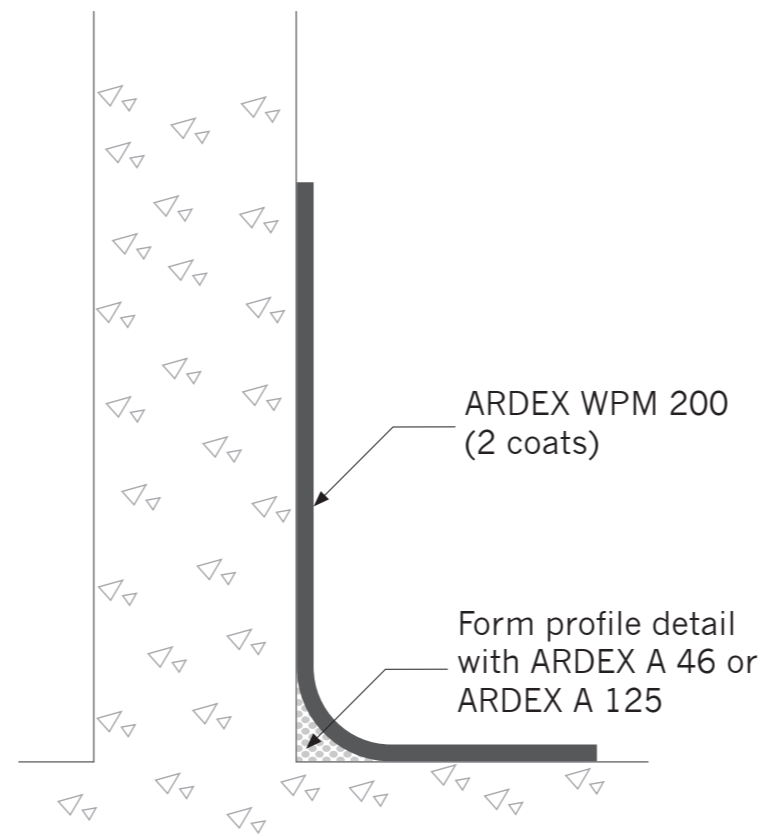


ARDEX WPM 200 EPOXIDE LIQUID WATERPROOF MEMBRANE

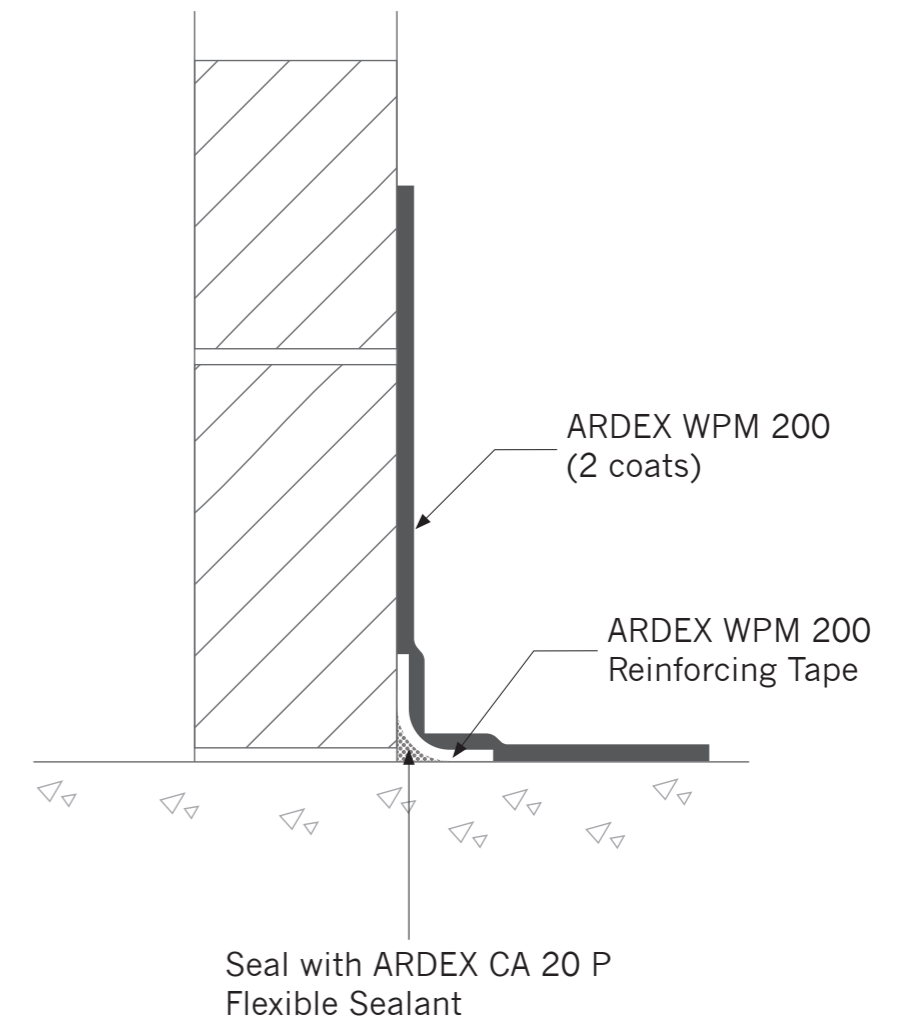
Element Intersection
or Partition Wall



Monolithic Concrete
Wall/Slab



Masonry



**PLANT ROOMS, BUNDED AREAS, AND RAISED
ACCESS FLOORS: WALL TO FLOOR SCHEMATIC**

Notes:

1. All products to be used and applied in accordance with the product datasheets.
2. References: BS 8215 and BS 8102.
3. Lap ARDEX WPM 200 Reinforcing Tape by a minimum of 50mm.

Version: WPM 200-201

Date: 23/05/18

Scale: N.T.S