

About ARDEX



Our company's heritage dates back more than 60 years and, as a global manufacturer of high performance speciality building materials, ARDEX has remained at the forefront of the UK Flooring and Tiling industries.

Today, ARDEX remains an independent, family owned business, which means throughout our efforts to achieve market-shaping innovations, we have been able to retain our most important tradition: uncompromising quality.

ARDEX offer a complete system approach for fast track construction projects. Including rapid drying cements for floor screeds, levelling compounds and moisture control systems within the flooring sector; through to professional tiling products such as specialist wall plasters, tile adhesives and grouts.

All ARDEX products help to ensure the perfect finish is created in the shortest possible time frame, whilst exceeding the demands placed upon them by modern construction practices.

Specification Support at Every Stage

When specifying ARDEX you can rely on our experienced Business Development Team to ensure the success of your project. For professional support at every stage, specification writing, and on-site guidance, you'll have a dedicated partner you can trust.

With our purpose-built training ARDEX Academy, we are able to bring all parties involved in an ARDEX specification together, from the client though to the main and sub-contractors to provide guidance and ensure total confidence in the specification and subsequent on-site application.

This book is a snapshot of some of our experience, and presents a number of UK construction projects that ARDEX has been proud to be a part of.



AQUATICS CENTRE
LONDON

866,000 tiles

were fixed in the London Aquatics Centre, which formed the gateway to the Olympic Park.

Products used: ARDEX WPC, ARDEX S 7,
ARDEX S 21, ARDEX X 77,
ARDEX-FLEX FL

Contractor: W B Simpson & Sons Ltd

AQUATICS CENTRE LONDON



ARDEX WPC
Waterproof
Protection System



ARDEX S 7
Flexible Waterproof
Coating for Floors
and Walls



ARDEX S 21
Rapid Hardening
Floor Tile Bedding
Mortar



ARDEX X 77
MICROTEC Flexible
Wall & Floor Tile
Adhesive



ARDEX-FLEX FL
Rapid Setting
Flexible Tile Grout
for Wide Joints

Having completed many prestigious leisure installations, ARDEX UK were delighted to work in partnership with specialist tiling contractor, W B Simpson & Sons, to supply the ideal tile fixing solution for the iconic Aquatics Centre at the Olympic Park, London.

As with previous high profile projects, it was the proven performance and versatility of the ARDEX products, and supporting teams, that won favour with the contractor. The levelling of the falls in the pool were achieved with ARDEX S 21, a Rapid Drying Floor Tile Bedding Mortar, which allowed further work to commence after only 3 hours. ARDEX S 7 provided fibre reinforced waterproofing prior to the fixing of the tiles with ARDEX X 77 MICROTEC® Flexible Wall & Floor Tile Adhesive. With a pot life of up to 3 hours and open time of up to 60 minutes, larger quantities of adhesive could be mixed, and subsequently spread, in a single application. This ultimately minimised

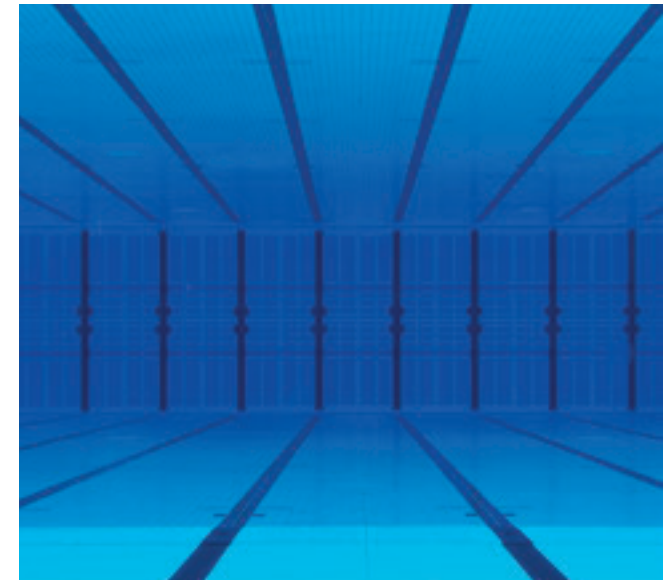
stopping between applications and, being suitable for every tile used in the Aquatics Centre, provided precious time and cost savings.

The finishing touch was provided by ARDEX ARDEX-FLEX FL Tile Grout, encompassing the pool tiles and pool surrounds.

On-going support was provided at every stage of the process, from specification writing to installation visits and on-site testing. ARDEX's purpose-built training facility enabled all parties involved to come together, from the client through to the main contractor, and ensured total confidence in the specification and subsequent on-site application.



A fitting legacy from London 2012



DAVID LLOYD LEISURE CLUB COLCHESTER

As part of a £50million group investment,
the prestigious Colchester club needed

3,500m² of tiling

to cover the swimming pools, changing
rooms, walkways and reception areas.

Products used: ARDEX A 38, ARDEX E 100,
ARDEX S 7, ARDEX WPC,
ARDEX X 77, ARDEX X 78,
ARDEX X 7, ARDEX-FLEX FS,
ARDEX-FLEX FL, ARDEX WA

Contractor: Profix Tiling Ltd

DAVID LLOYD LEISURE CLUB COLCHESTER



ARDEX A 38
Ultra Rapid Drying
Cement for Internal &
External Screeds



ARDEX WPC
Waterproof Protection
System



ARDEX X 77
MICROTEC Flexible
Wall & Floor Tile
Adhesive



ARDEX X 78
MICROTEC Flexible
Semi-Pourable Floor
Tile Adhesive



ARDEX-FLEX FS
Flexible Tile Grout

David Lloyd is a leading brand in the health and fitness industry, with 86 centres servicing approximately 475,000 members across the UK. After being acquired by TDR Capital in 2013, £50million is now being invested into the group in order to expand its network of clubs and grow its membership further.

For the swimming areas, which included three pools as well as spa facilities and changing rooms, Greg Paclawski of Profix Tiling Ltd contacted Adam Willmott, Business Development Manager for ARDEX UK, for advice on the tiling specification. Greg commented, "I was keen to work with ARDEX as I've always used their products and never had any problems; they've never let me

down and their technical support is excellent. The ARDEX specification gave the client confidence in the system, and their fast track products meant we could deliver the project within the tight deadline we were working to."

The system met the contractors' rigorous standards, passing independent product and application tests. Adam visited the site throughout the project to help with any extra work required, and offer on-site advice gained from over 30 years of tiling experience.

"Large, varied areas of different types of tiles were fixed throughout the site, with a comprehensive system of ARDEX products. The overall result is a stunning leisure facility that will service its members for years to come."

Adam Willmott, Business Development Manager at ARDEX UK Ltd



Refurbishing Europe's premier health & fitness provider



THE ROYAL ALBERT HALL
LONDON

400m² of ARDITEX NA

provided the perfect levelling and smoothing solution for one of the most treasured and distinctive buildings in the UK.

Products used: ARDITEX NA, ARDEX AF 2300

Contractor: East West Flooring Company Limited,
London

THE ROYAL ALBERT HALL LONDON



ARDITEX NA
Ultra Rapid Setting
Latex Subfloor Levelling
and Smoothing
Compound



ARDEX AF 2300
Solvent Free Rubber
Floorcovering
Adhesive

The Royal Albert Hall is one of the most treasured and distinctive buildings in the UK, and the concert hall is now enjoyed by well over a million people each year. Teaming up with East West Flooring, ARDEX UK specified the ideal flooring solution for the main ground floor atrium, which had to be durable and perfectly smooth before receiving the final floorcoverings at the earliest possible opportunity.

Once the existing floor had been removed, ARDITEX NA, an Ultra Rapid Setting Latex Subfloor Levelling and Smoothing Compound, was applied to the 400m² area. ARDITEX NA's rapid setting properties mean that floorcoverings can be applied

after just 4 hours, and its adhesion and flexibility mean its perfect for levelling almost all subfloors.

To complete the system, the Freudenberg rubber floor tiles were fixed with ARDEX AF 2300 Solvent Free Rubber Floorcovering Adhesive, which like the whole ARDEX adhesive range, offer the professional installer unique application benefits and guaranteed long term performance.

"We were delighted to work on this project, and it was of course essential that we assured our client of a totally proven solution. By working with ARDEX, things are never 'left to chance' – the job is always delivered on time, on budget, and with outstanding results".

Terry Neville-Jones, East West Flooring



World class solution for the world's best artists



TOLLCROSS INTERNATIONAL SWIMMING CENTRE GLASGOW

Totally refurbished in

only 8 weeks

After the late realisation that the entire pool floor had to be removed and retiled, ARDEX dived in to offer a fast track solution for the upcoming Commonwealth Games.

Products used: ARDEX A 38, ARDEX WPM 200,

ARDEX X 77, ARDEX EG 8

Contractor: Tilecraft Services Ltd

TOLLCROSS INTERNATIONAL SWIMMING CENTRE



ARDEX A 38
Ultra Rapid Drying
Cement for Internal
& External Screeds



ARDEX WPM 200
Solvent Free Multi
Purpose Epoxide
Primer Coating &
Damp Proof Membrane



ARDEX X 77
MICROTEC Flexible
Wall & Floor Tile
Adhesive



ARDEX EG 8
Cement/Epoxy
Hybrid Tile Grout

In anticipation of the arrival of the Commonwealth Games, Tollcross International Swimming Centre's existing facilities underwent a complete refurbishment and upgrade. However, during works to strengthen the ceiling, contractors noticed that some of the screed below the tiles on the main competition pool floor had separated from the concrete pool tank. The entire floor of the pool needed to be removed and re-laid.

Scott Faichey, Architectural Technologist for the pool's owners, Glasgow City Council commented "The renovations were undertaken to ensure the centre could handle the sheer influx of competitors and spectators for the 2014 Commonwealth Games. The late realisation that the pool would need

a complete refurbishment meant that it had to be completed in just 8 weeks, as Tollcross was due to host the Scottish Gas National Open Championships."

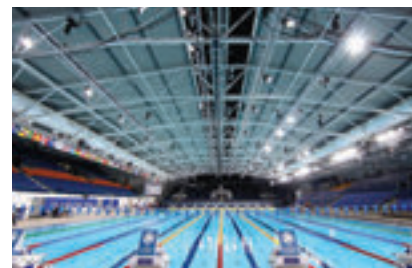
Andy Reid, National Business Development Manager at ARDEX UK, said: "ARDEX A 38 Fast Track Screed Cement allowed the tiles to be laid after only 4 hours, whereas ordinary portland cement screeds can take anywhere from 3 weeks to two months to dry, and with the restrictive time frame that would have spelt disaster for the project. ARDEX were able to get the job done and meet the exact needs of the client because of the specialist nature and premium quality of our products."

"I am a big fan of ARDEX products, and have complete confidence knowing that the refurbishment of the competition pool was carried out by quality tradesman using high performance products. In a project where there was no room for mistakes, it was easy to see why ARDEX's industry knowledge is considered second to none."

John Taylor, Managing Director of Tilecraft



A race to the finish ends in success



ODEON CINEMA
PORT SOLENT, PORTSMOUTH

350m²

of the entrance foyer and retail area was levelled and smoothed over 3 nights, allowing the cinema to remain fully operational.

Products used: ARDEX K 39, ARDEX P 4

Contractor: CAPS Limited

ODEON CINEMA PORT SOLENT, PORTSMOUTH



ARDEX K 39
Extended Workability,
High Flow Levelling
and Smoothing
Compound



ARDEX P 4
Ready Mixed Rapid
Drying Multi-Purpose
Primer

The Odeon Cinema located in Port Solent, Hampshire, was recently selected to undergo a complete renovation to the entrance foyer and retail areas. In charge of handling this project was CAPS Ltd., a family run company that installs flooring and acoustic wall panels all over the UK and Europe, and chosen contractor for all Odeon Cinemas throughout the UK.

William Fox, MD of CAPS Ltd explains "The project was to be completed over three nights, with work commencing at 11pm each night after all the customers had left. It was vital the cinema remained fully operational throughout the day while refurbishments were being carried out."

Glen Sell, Area Sales Manager at ARDEX UK, commented "CAPS Ltd. had never previously worked with ARDEX products, however when this particular Odeon Cinema project arose I was confident that ARDEX K 39 would exceed the requirements of the job."

ARDEX K 39 was chosen because of its unrivalled properties. It has a 40 minute workable wet edge, and excellent flow, proving perfect for application with a pin rake, removing the need for workers to kneel down with a trowel. Its excellent flow and self-levelling properties resulted in an application time which is 2-3 times faster than other standard levelling and smoothing compounds.

"It is now our intention to use ARDEX K 39 on future projects. Having received only positive feedback from our fitting team, and with the job finished to such a high standard under limited time conditions, we feel that ARDEX is the provider that can offer us a reliable service in every instance."

William Fox, Managing Director of CAPS Ltd



3 nights to complete and zero downtime



GLENEAGLES HOTEL,
SPA & GOLF RESORT
PERTSHIRE

£5m renovation against the clock

“ARDEX helped us through each stage, from specification writing of the project to on-site visits. The support was second to none.”
Paul Lovell, MD of Leisure Design Ltd

Products used: ARDEX X 77, ARDEX EG 8

Contractor: Leisure Design Ltd

GLENEAGLES HOTEL SPA & GOLF RESORT PERTHSHIRE



ARDEX X 77
MICROTEC Flexible
Wall & Floor Tile
Adhesive



ARDEX EG 8
Cement/Epoxy
Hybrid Tile Grout

For the first time since 1973, and for only the second time in history, The Ryder Cup returned to the home of golf in Scotland. In September 2014, the Gleneagles Hotel in Perthshire held one of the greatest tournaments in golf. Set within 850 acres of Perthshire countryside, the five star Gleneagles Hotel, Spa and Golf Resort is home to three championship golf courses, an award-winning spa and an exhilarating array of outdoor activities.

Andy Reid, National Business Development Manager at ARDEX UK, said: "The existing luxury spa resort underwent a £5million refurbishment programme in anticipation of the arrival of the Ryder Cup. We were able to specify high performance products that not only made the fixer's job easier, with unique

product application benefits, but that guaranteed that the project would be finished in the time frame required."

ARDEX X 77 MICROTEC Flexible Wall & Floor Tile Adhesive provided the perfect choice with its 60 minute open time, twice the requirement of BS EN 12004, and up to 3 hours pot life from a single mix. It also has double the slump resistance of 'T' classified adhesives, making it ideal for large format tiles.

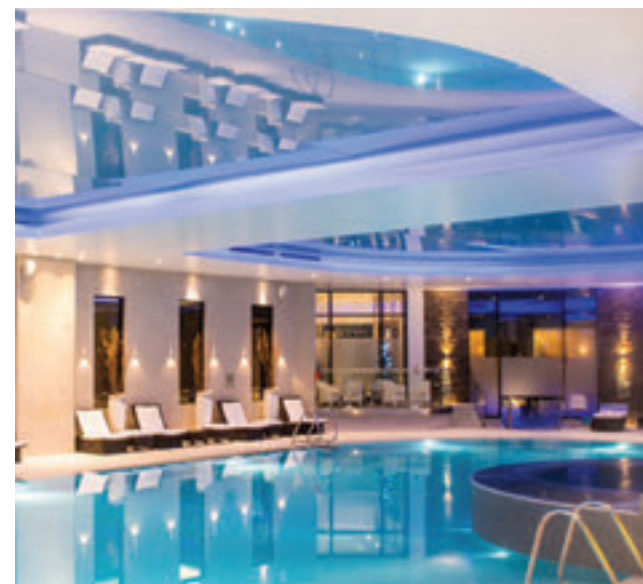
For the waterproof grout, ARDEX EG 8 Cement/Epoxy Hybrid Tile Grout was used, which combines the chemical resistance of epoxy grouts with the ease of application of those which are cement based, and is perfect for use in swimming pools, hydrotherapy baths and showers.

"Having worked with ARDEX on previous projects we had complete confidence in the specification given by the ARDEX Business Development Team. They helped us through each stage, from specification writing through to on-site visits, the support was second to none. The refurbishment of the spa was carried out by our quality fixers, using the best possible products for the task."

Paul Lovell, Managing Director of Leisure Design



Ready for the Ryder Cup



ST GEORGE'S CHAPEL
WESTMINSTER CATHEDRAL
LONDON

1/2 million

tesserae of Venetian glass and gold-faced tiles had to be fixed to the 120m² dome vault ceiling and supporting arches. The result was an outstanding mosaic depicting original artwork by the renowned artist Tom Philips CBE RA.

Products used: ARDEX AM 100, ARDEX X 7 G,
ARDEX E 90, ARDEX-FLEX FS

Contractor: The Mosaic Restoration Company Ltd



ST GEORGES CHAPEL WESTMINSTER CATHEDRAL LONDON



ARDEX AM 100
Rapid Hardening
Tiling Render



ARDEX X 7 G
Standard Setting
Flexible Tile
Adhesive



ARDEX E 90
Mortar Admix



ARDEX-FLEX FS
Flexible Tile Grout
for Narrow Joints

Westminster Cathedral is one of the busiest churches in the United Kingdom and, to mark the centenary of the Battle of the Somme, the barrel vault ceiling and main arches of the Chapel of St George underwent a complete redesign.

The new design was commissioned to the renowned artist Tom Phillips CBE RA, and comprised of a breathtaking 500,000 piece mosaic depicting the burning names of the forty Catholic martyrs across a dark sky. For a church that hosts up to 7 masses a day, disruption had to be kept to a minimum; and a further challenge was presented by centuries of candle soot that had accumulated on the surface of the 120m² ceiling.

The Mosaic Restoration Company was awarded the immense project, headed up by one of the UK's leading specialists, Gary Bricknell. Working closely with Adam Wilmott, ARDEX Business Development Manager, who has decades of practical experience as a professional tiler, devised the perfect solution which included a mechanically fixed metal lath system.

ARDEX AM 100 Rapid Hardening Tiling Render was chosen as it comes pre-blended, and is ready to receive tiles in only 2 hours. ARDEX X 7 G Standard Setting Flexible Tile Adhesive provided a slump free bond, as well as up to 5 hours pot life from a single mix. Finished off with the ARDEX-FLEX FS Tile Grout, the result is a truly spectacular view above.

"The installation was extremely challenging. Having worked with ARDEX products that have produced years of outstanding results, we turned to Adam for advice on the render, fixing and grout materials."

Gary Bricknell, The Mosaic Restoration Company



18th century architecture
meets 21st century art & technology





SCOTTISH PARLIAMENT
EDINBURGH

Award Winning

postmodern styling was achieved with a mix of ARDEX products, including PANDOMO®, helping to make the Scottish Parliament one of the most innovative architectural designs in the UK.

Products used: ARDEX P 4, ARDEX P 51, PANDOMO® Wall

Contractor: Artstone Concrete

SCOTTISH PARLIAMENT EDINBURGH



PANDOMO® W1
Decorative Finish
Render



PANDOMO® W3
Decorative Finish
Render



PANDOMO® CC
Colour
Concentrate



PANDOMO®
SL Stoneoil



ARDEX P 4
Ready Mixed Rapid
Drying Multi-Purpose
Primer



ARDEX P 51
Concentrated
Water-Based Primer
& Bonding Agent

Residing in Holyrood, Edinburgh, the Scottish Parliament is one of the most prestigious legislators in the United Kingdom. The building, built in 1999, was opened by Queen Elizabeth II, and the first parliament started session in 2004. The building's impressive post-modern architecture has won it critical acclaim and many respected awards, and has been hailed as one of the most innovative designs in modern Britain.

The vast three year project started with the refurbishment of the main entrance, and the current soffits which were to be recovered and improved. PANDOMO® by ARDEX was chosen

for this project, and Artstone Concrete, an experienced PANDOMO® contractor, as the chosen craftsmen. PANDOMO® creates a decorative, seamless and very hard wearing surface for floors, walls and ceilings. Due to the contractor's experience working with PANDOMO® products, the specified PANDOMO® Wall finish enhances the buildings post-modern design and creates a sense of light that opens up the main entrance.

"As the building had to be ready each morning for the parliament's session, we knew that time was of the essence. We've worked with ARDEX before on numerous projects, particularly with their PANDOMO® products, so we knew that with their help and expertise, the job could be completed quickly and to the highest of standards. PANDOMO® provided the perfect post-modern look, in keeping with the rest of the building, adding a sense of light to the space. Everyone was delighted with the end result, both aesthetically and in performance."

James Liversedge, Artstone Concrete



Prestigious refurbishment for the Scottish Parliament



VICTORIA AND ALBERT MUSEUM LONDON

Thousands of original

English Heritage

wooden blocks had to be removed,
resurfaced and re-laid using a complete
system of ARDEX Fast Track products
under the strictest guidelines.

Products used: ARDITEX NA, ARDEX A 38,
ARDEX DPM 1 C R, ARDEX AF 2510,
ARDEX ARDURAPID A 45

Contractor: Floorcraft Ltd

VICTORIA AND ALBERT MUSEUM LONDON



ARDEX NA
Ultra Rapid Setting
Latex Subfloor
Levelling and
Smoothing Compound



ARDEX A 38
Ultra Rapid Drying
Cement for Internal
& External Screeds



ARDEX DPM 1 C R
Rapid Drying One
Coat Surface Damp
Proof Membrane



ARDEX AF 2510
High Strength
Polyurethane
Adhesive



ARDEX ARDURAPID A 45
Rapid Drying Internal
Repair Mortar

Home to the world's largest collection of decorative arts and design, with a permanent collection of over 4.5 million objects, the Victoria and Albert Museum is one the most iconic attractions in the UK. Since 2001, the museum has benefitted from a £150million renovation programme, which includes new galleries, gardens, shops and visitor facilities. As part of this programme, the museum floor was refurbished to provide an updated look whilst maintaining its historic appeal.

Steve Long, Director at Floorcraft Ltd, the chosen contractor for the project said: "When we removed the original parquet floor we found hot pitch, also known as bitumen, which was used as a damp proof membrane. During the removal of the floor the bitumen was damaged, and exposed the original concrete base."

ARDEX Area Sales Manager, John Oliver said "Due to the age of the building and the problems that occurred during the removal of the floor, a moisture control system needed to be put in place to protect the final floorcovering from ground bearing moisture. First, moisture tolerant ARDITEX NA was applied directly to the uneven, damaged subfloor to create a smooth, flat surface, onto which the damp proof membrane, ARDEX DPM 1 C R could be applied.

A final application of ARDITEX NA was applied direct to the ARDEX Damp Proof Membrane without priming, before the original English heritage wood blocks, which had to be resurfaced and treated, were re-fixed to the floor with ARDEX AF 2510 Floorcovering Adhesive."

"The job at the V&A involved the removal of the original English Heritage wood blocks, which had to be resurfaced and treated before being re-fixed to the floor. We had to comply with strict rules, in keeping with the traditional décor of the museum."

Steve Long, Director of Floorcraft Ltd



Home to the world's largest collection of decorative arts and design



BRITISH MUSEUM LONDON

The museum receives

6.7 million

visitors per year, many of whom use the Great Court restaurant. A complete refurbishment of the floor was required to handle this highly trafficked area.

Products used: ARDEX PSRS, ARDEX A 35, ARDITEX NA, ARDEX X 77, ARDEX-FLEX FL

Contractor: W B Simpson & Sons Limited

BRITISH MUSEUM LONDON



ARDEX PSRS
Penetrating Screed
Renovation System



ARDEX A 35
Ultra Rapid Drying
Cement for Internal
Screeds



ARDITEX NA
Ultra Rapid Setting
Latex Subfloor
Levelling and
Smoothing Compound



ARDEX X 77
MICROTEC Flexible
Wall & Floor Tile
Adhesive



ARDEX-FLEX FL
Rapid Setting
Flexible Tile Grout
for Wide Joints

The British Museum opened its doors to the public in 1759 as the first national public museum in the world. Now home to some 8 million works from a number of different cultures, the museum stands as an iconic London attraction.

The Great Court restaurant offers the museum's visitors a chance to relax and enjoy a refined dining experience away from the hubbub of activity in the museum. In order to maintain this experience, The British Museum made the decision to replace the restaurant's old flooring, as it could no longer handle the vast number of visitors using the restaurant every day.

W B Simpson & Sons Ltd was the chosen tiling contractor to complete the new installation. Marc Poland, Director at W B Simpson & Sons Ltd said "We could provide and lay the

desired style of tiles, however we needed the correct products which would enable us to do this within the tight time frame given, and to the high standard expected by the museum."

Andy Reid, National Business Development Manager at ARDEX UK, explains, "After carrying out a site visit, I compiled a bespoke specification which would meet the requirements of The British Museum. ARDITEX NA and ARDEX X 77 were ideal for this particular project, ensuring the museum's tight time constraints were adhered to, and ARDEX-FLEX FL Tile Grout protected against the day to day wear of a busy restaurant floor."

"Working with ARDEX UK makes our job a whole lot easier. Not only are their products reliable and of premium quality, but the company is established within its industry meaning that when the unexpected happens, ARDEX have the knowledge, experience and portfolio of products to swiftly react."

Marc Poland, Director of W B Simpson & Sons



Ready to receive visitors for decades to come



KING'S CROSS RAILWAY STATION
LONDON

4,300m²

of screeding, tiling and grouting was installed in the new state-of-the-art ticket hall. Taking advantage of ARDEX's unique RAPIDRY FORMULA Technology, ARDEX A 35 Screed Cement was laid to 85mm and was ready for tiling in just 24 hours.

Products used: ARDEX A 35, ARDEX S 21, ARDEX-FLEX FL

Contractor: DMC Contracts Ltd

Piccadilly line
Victor

KING'S CROSS RAILWAY STATION LONDON



ARDEX A 35
Ultra Rapid Drying
Cement for Internal
Screeds

ARDEX S 21
Rapid Hardening
Floor Tile Bedding
Mortar

ARDEX-FLEX FL
Rapid Setting
Flexible Tile
Grout

ARDEX UK, world leaders of high quality flooring and tiling products were pleased to work alongside DMC Rail Ltd of Tilbury, Essex to provide a 4,300m² screeding, tiling and grouting solution for the new, state-of-the-art Northern ticket hall at King's Cross St Pancras Underground station.

The ticket hall required a durable, flat and smooth floor surface, which could receive tiles at the earliest possible opportunity. With an excellent track record for successful commercial flooring installations, ARDEX A 35 Rapid Drying Screed Cement was used at 85mm as it provided the key benefit of fast track performance. The screed cement hardens so quickly, that it can be walked on after only 3 hours, meaning further work can commence after just 24 hours,

significantly reducing down time. A wait of at least a month would have been required before an ordinary portland sand and cement screed would be hard and dry enough for further work to proceed.

The new large format tiles were fixed using ARDEX S 21 Rapid Hardening Floor Tile Bedding Mortar. The hardening properties of ARDEX S 21 allowed further work to commence after only 3 hours, once again reducing valuable down time.

“Teaming up with ARDEX to complete this prestigious project, not only assured proven product performance, but we also benefited from their outstanding technical support which was consistently excellent throughout the project”

Dave McCartney, DMC Rail Ltd



85mm deep screed walkable faster than the journey time from Platform 6 to Newcastle!



GLASGOW AIRPORT
GLASGOW

3,000m² of new flooring

was applied over multiple types of substrates, under the restriction of 5 hour night shifts whilst the airport remained fully operational.

Products used: ARDITEX NA, ARDEX ARDURAPID A 45

Contractor: P Layden & Son Ltd

GLASGOW AIRPORT GLASGOW



ARDITEX NA
Ultra Rapid Setting
Latex Subfloor Levelling
and Smoothing
Compound

ARDEX ARDURAPID A 45
Rapid Drying Internal
Repair Mortar

In 2014, Glasgow played host to the Commonwealth Games, Ryder Cup and celebrated the Year of Homecoming Scotland. Expecting in excess of 1.25 million guests over the summer period, it was announced that Glasgow International Airport would benefit from a £17million makeover to accommodate the sheer influx of people.

One of the most significant and comprehensive upgrades to the main terminal since it opened in 1966, the refurbishment works included the installation of a new 3000m² floor to the Central Pier, which was contracted to P Layden and Son.

Richard Layden, at P Layden and Son, explains, "This was a particularly challenging job as the Central Pier

was part of the original build, making the existing flooring almost 50 years old. When removing the old flooring we were faced with a number of different substrates, and it was essential that the chosen levelling compound could be used with confidence over all of these."

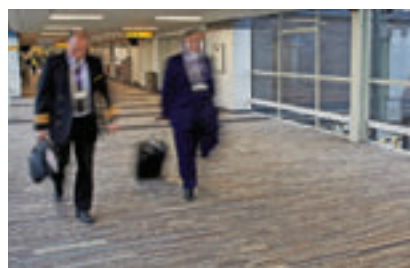
"We also had to work around the strict flying schedule of the airport. Work was to begin at 11pm each night as the last flight came in, and stop at 5am as the first plane of the day departed at 6am each morning. We needed to work at a fast pace."

"Having previously worked with ARDEX on a number of projects I knew that they would be able to deliver products that could ensure the job was completed to the standard expected, and within the time frame given."

Richard Layden, P Layden and Son



ARDEX renovation proves soaring success



TOTTENHAM COURT ROAD
UNDERGROUND STATION
LONDON

The largest refurbishment

since its opening in 1900 required a full system of ARDEX products. DMC Contracts Limited credited the success of the project not only to the enhanced performance of ARDEX products, but also to the on-site technical support they received at every stage.

Products used: ARDEX A 38, ARDEX AM 100,
ARDEX A 46, ARDEX X 78,
ARDEX X 77, ARDEX-FLEX FL

Contractor: DMC Contracts Ltd

TOTTENHAM COURT ROAD UNDERGROUND STATION LONDON



ARDEX A 38
Ultra Rapid Drying
Cement for Internal
& External Screeds



ARDEX AM 100
Rapid Hardening
Tiling Render



ARDEX A 46
Multi-Purpose
Repair Mortar



ARDEX X 78
MICROTEC Flexible
Semi-Pourable Floor
Tile Adhesive



ARDEX X 77
MICROTEC Flexible
Wall & Floor Tile
Adhesive



ARDEX-FLEX FL
Rapid Setting
Flexible Tile
Grout

Tottenham Court Road Underground Station opened as part of the Central London Railway in July 1900. Currently, it connects over 150,000 passengers daily around London, and this is expected to increase to over 200,000 when Cross Rail serves the station in 2018.

DMC Contracts Ltd, a main contractor for refurbishment works on the London Underground, reached a milestone in December 2015 by assisting in the opening of the Central Line of Tottenham Court Road Station. Throughout 2015, DMC Contracts Ltd worked with ARDEX to complete the station's upgrade. Dave McCartney, Chief Executive of DMC Contracts Ltd, commented "We have a long standing relationship with ARDEX UK, and have worked for many

years with their team, developing designs and completing a number of major projects across the UK to the satisfaction of our clients."

The design required DMC Contracts Ltd to complete a full wall and floor tiling installation, including bespoke pre-cast skirtings and treads for the stairs and walkways. The installation process comprised of breaking back to the existing substrate, making repairs where required using ARDEX Repair Mortars and Screed Cements, and installing Expamet Riblath.

"We have a long standing relationship with ARDEX UK, and have worked for many years with their team, developing designs and completing a number of major projects across the UK to the satisfaction of our clients."

Dave McCartney, Chief Executive of DMC Contracts Ltd



Over 150,000 daily commuters



HEATHROW AIRPORT
LONDON

A 40,000m²

flooring refurbishment of Heathrow Airport's Terminal 1 helps 12 million passengers a year to experience a faster and more comfortable journey, from check-in to take off.

Products used: ARDITEX NA, ARDEX AF 2300

Contractor: Loughton Contracts PLC

Prepare for security

Laptops to
be removed
from bags



Thank you for your co-operation.

For assistance please call 0203 830000 or visit www.baa.co.uk

Stairs to:
Restaurant
Bar/pub
Zone B airline desks
Toilets

HEATHROW AIRPORT LONDON



ARDITEX NA
Ultra Rapid Setting
Latex Subfloor
Levelling and
Smoothing Compound



ARDEX AF 2300
Solvent Free Rubber
Floorcovering
Adhesive

Renowned manufacturer of quality flooring systems, ARDEX UK, teamed up with one of the UK's leading flooring contractors, Loughton Contracts, to deliver a 40,000m² refurbishment of Heathrow Airport's Terminal 1. Boasting an excellent portfolio of successful large scale commercial installations, the proven duo specified the perfect ARDEX System Solution, which enabled the final floorcoverings to be laid at the earliest opportunity.

Once the existing floorcoverings had been uplifted, ARDITEX NA was applied. Developed for use on virtually all kinds of substrates, it can be laid

from a feather edge to 30mm in a single application.

A combination of floorcoverings from Nora Flooring Systems UK Limited were fixed with ARDEX AF 2300 Adhesive, which proved a perfect match for coping with the 12 million passengers the terminal welcomes every year.

"This large installation required a proven, fast track solution that would ensure minimal disruption to the airport. By working with ARDEX we could deliver exceptional results; and the peace of mind that is synonymous with ARDEX's advanced flooring products, assured a rapid and perfect finish, completed on schedule."

John Collier, Sales Director of Loughton Contracts PLC



"ARDEX's advanced flooring products assured a rapid and perfect finish, completed on schedule"



PICCADILLY CIRCUS
UNDERGROUND STATION
LONDON

500,000 tiles

were fixed in 1984 using ARDEX products, and they still look as good today. Adam Wilmott, Business Development Manager for ARDEX, and an original tiler on the project, recalls ARDEX products being installed in a 4 hour window between the station closing at night, and reopening safe and ready for the next morning.

Products used: ARDEX A 35, ARDEX S 16,
ARDEX E 90, ARDEX GK

Contractor: Bovis Ltd, Ceramic Tiles Ltd and
Marriott and Price Ltd

PICCADILLY CIRCUS UNDERGROUND STATION LONDON



ARDEX A 35
Ultra Rapid Drying
Cement for Internal
Screeds



ARDEX S 16
Rapid Drying Natural
Stone Wall & Floor
Tile Adhesive



ARDEX E 90
Tile Adhesive
Improver



ARDEX GK
Rapid Setting &
Hardening Tile
Grout

It's been over 30 years since ARDEX products were used on the refurbishment of Piccadilly Circus Underground Station in 1984, and although there have been thousands of commuters passing through each day, the work has stood the test of time.

The works took approximately two years to finish, and included the fixing of over half a million tiles to the walls, floors and ceilings using ARDEX products.

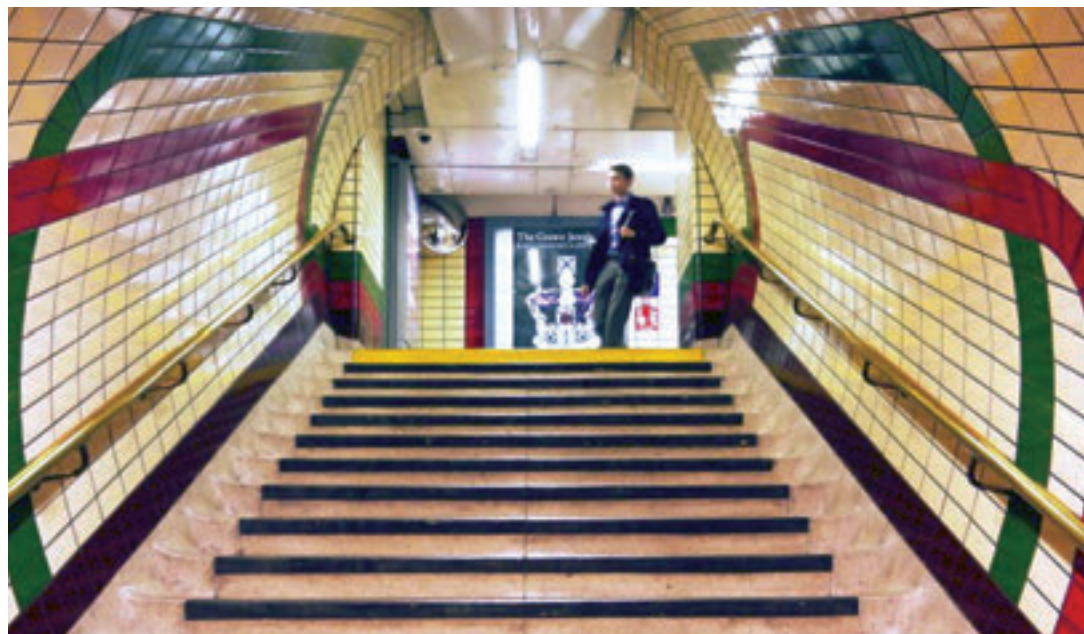
The project involved the collaboration of 3 contractors, Bovis Ltd, Ceramic Tiles Ltd and Marriott and Price Ltd, who worked closely with Cyril Potter, Chief Chemist at ARDEX UK, to develop a unique specification which would enable the work to be completed swiftly and efficiently. Due to the tight constraints of working on a live site, and with only four hours

available after the station had closed each evening, it was important the project was completed to the highest of standards, whilst ensuring it was ready for public use the next day.

Adam Willmott, Business Development Manager at ARDEX UK and a tiler on this project, along with his father and brother, commented, "After 30 years, the refurbishment still looks the same as it did when we first completed the project back in 1984. The condition of the station is second to none, with no cracking or de-bonding evident in the original tiles."

"The work at Piccadilly Circus demonstrates ARDEX's history and well-earned reputation. The end result of the refurbishment looked fantastic and we are delighted that it still looks as great today."

Adam Willmott, Business Development Manager at ARDEX UK



Over 30 years on and still no cracking or de-bonding evident on the original tiles



SELFRIDGES FOOD HALL LONDON

Over

200 million visitors

visit Selfridges every year. So when the iconic food hall needed renovating, only ARDEX products could achieve the speed and reliability needed for this high footfall environment which had to be ready for the public every morning.

Products used: ARDEX A 46, ARDEX DPM 1 C,
ARDEX A 38, ARDITEX NA

Contractor: Henny Limited

SELFRIDGES FOOD HALL LONDON



ARDEX A 46
Multi-Purpose
Repair Mortar

ARDEX DPM 1 C
One Coat Surface
Damp Proof
Membrane

ARDEX A 38
Ultra Rapid Drying
Cement for Internal
& External Screeds

ARDITEX NA
Ultra Rapid Setting
Latex Subfloor Levelling
and Smoothing
Compound

Selfridges, founded in 1901 by Harry Gordon Selfridge, is regarded as one of the world's finest department stores. It offers a huge array of services, from fashion and wedding lists to a world-famous dining experience in the food hall. To maintain its high standards, and to provide an updated look, Selfridges made the decision to refurbish the food hall's stunning marble floor and eye-catching glass lift.

Stone and floor contractor, Henny Ltd, were appointed to lead the project. Matthew Pearson, Managing Director at Henny Ltd. who has worked with ARDEX for many years, turned to Business Development Manager Paul Forrester for specification advice.

Paul Forrester explains, "After visiting the site, we could see there was extensive damage to the original screed

due to rising moisture in the subfloor. The use of ARDEX DPM 1 C Damp Proof Membrane was the ideal solution, because it can be applied where a structural damp proof membrane is not present or is ineffective. It also helps to protect the final floorcovering from any residual construction moisture and rising damp".

To replace the damaged screed, ARDEX A 38 Ultra Rapid Drying Cement for Screeds, was ideal for this project, as it allowed the next stage of the flooring installation to commence after just 4, hours which adhered to Selfridges tight time constraints.

"Once again, we were delighted with the versatility of ARDEX products which were used in various thicknesses and environments. The technical support provided on-site by the ARDEX Business Development team, along with ARDEX's reputation, is second to none."

Matthew Pearson, Managing Director of Henny Ltd



Over 200 million visitors a year



THE OLD TOWN BARBER CLUB
DUNFERMLINE

PANDOMO® LOFT

pushed the boundaries of traditional floor design, offering the ability to produce intricate designs, coupled with a hard wearing finish to maintain the floors impact for years to come.

Products used: PANDOMO® LOFT

Contractor: Artstone Concrete

THE OLD TOWN BARBER CLUB DUNFERMLINE



The Old Town Barber Club recently opened its doors to the gentlemen of Dunfermline. Offering a truly unique experience, the 1920s New York inspired salon is filled with old oak panelling, big leather chairs and intricate hexagonal-patterned flooring. This classic styling blends seamlessly with its surroundings in the ancient capital of Scotland.

Artstone Concrete was the chosen contractor in charge of designing and applying the distinctive floor. Familiar with pushing the boundaries of traditional floor design, the flooring specialists had to factor in the challenge of a durable, seamless floor that had to withstand footfall 6 days a week, heavy metal chairs and

potential chemical spills, whilst at the same time offering an intricate and unique design for the flagship barber shop.

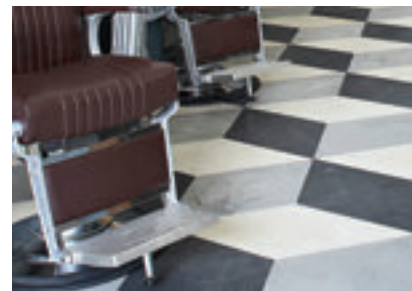
In order to deliver the refit of the floor, Artstone Concrete chose ARDEX's PANDOMO® Loft, a decorative, seamless and very hard wearing finished surface for floors. James Liversedge, Director of Artstone Concrete, explained: "This job had been on our drawing board for a while. The floor design had been developed and finalised but we needed to decide on the right product which would allow us to recreate a fit-for-purpose floor, without losing any of its impact and originality."

"PANDOMO® Loft's durability and seamlessness, paired with the exceptional skill of Artstone Concrete, created a partnership which challenged the conventions of traditional flooring design. The client was so pleased with the results, that the Dunfermline salon is set to be the flagship store in a series of Old Town Barber Clubs."

Adrian Ashby, Business Development Manager of PANDOMO® UK



1920s styling meets 21st century flooring



ST. DAVID'S SHOPPING CENTRE
CARDIFF

8,000m² of limestone tiling

was fixed using ARDEX X 7001 W
Tile Adhesive with Rapidry Formula
Technology. The luxury tiles were grouted
in just two hours, providing the perfect
finish to the £675m modernisation of the
shopping centre.

Products used: ARDEX X 7001 W

Contractor: Stone Cladding International

ST. DAVID'S SHOPPING CENTRE CARDIFF



ARDEX X 7001 W
MICROTEC Rapid
Drying Pourable Floor
Tile Adhesive

Having completed many prestigious shopping centre installations, ARDEX UK were delighted to work in partnership with Stone Cladding International Ltd, to assist with the completion of the vast £675million extension to St David's Shopping Centre in Cardiff. During its construction, St David's was one of the largest private financial investments in the UK.

For this installation, ARDEX X 7001 W MICROTEC Rapid Drying Pourable Floor Tile Adhesive was used to fix 8,000m² of limestone tiling throughout the malls. Developed using MICROTEC fibre reinforcement technology, ARDEX X 7001 is now widely recognised as one of the most advanced tile adhesives for the fixing of natural stone.

Suitable for fixing limestone, as well as light coloured and translucent marble, ARDEX X 7001 W virtually eliminates the risks of moisture staining and warping, common with moisture sensitive natural stone. Additional features include a 60 minute pot life, double that of traditional adhesives; a pourable mix consistency that facilitates solid bed fixing; and rapid drying properties that allow grouting to commence just 2 hours after fixing.

"St David's required a totally reliable and proven tile fixing solution that guaranteed suitability for use with limestone tiles. By combining our vast expertise with the outstanding tile fixing solutions from ARDEX, we were able to provide a perfect finish to this amazing new development".

Stephen Facey, Managing Director of Stone Cladding International



"St David's required a reliable and proven tile fixing solution"



MONSOON STORE WIMBLEDON LONDON

Workers were walking over the levelled floor

just 3 hours

after applying the ARDEX A 38 floor screed, allowing work to continue and ensuring the store was open in time for the Wimbledon Tennis Championships.

Products used: ARDEX A 38, PANDOMO® FLOOR, ARDEX FA 20, ARDEX Feather Finish

Contractor: Monsoon Accessorise Limited

MONSOON STORE WIMBLEDON LONDON



Founded in 1973, Monsoon Accessorize is a London brand with 400 stores in the United Kingdom, and over 1000 throughout the world. In June 2014, as the world's greatest tennis players descended on Centre Court, Monsoon prepared for the opening of a brand new store in the Wimbledon area. Two existing shops were merged, and the floor would feature an intricate Persian rug etching, for a stylish finish.

Adrian Ashby, Business Development Manager of PANDOMO® UK explains: "The original brief was to complete the application and finishing of the PANDOMO® floor within two weeks. But the pre-levelling works to merge the two existing shops was an unforeseen task. The two floors were not only different types but also set on different levels, meaning fundamental

work had to be carried out to create an equal starting point before work could begin on the design of the floor."

Aware of the level of difficulty this job entailed, ARDEX recommended the use of Lasercroft Ltd., an applicator for flooring systems and PANDOMO® specialist. James Carmichael, applicator at Lasercroft Ltd. commented: "These additional works added to the client's schedule, which could have affected the store opening, but with the Wimbledon Tennis championships about to begin this wasn't an option. ARDEX's Fast Track Screed Cement ARDEX A 38, was therefore an invaluable product as it allowed the work to be carried out within the allocated time, and without jeopardising the final results."

"Workers were walking over the levelled floor just three hours after applying ARDEX A 38, ensuring work could continue at the necessary pace to meet the two week deadline, and the PANDOMO® floor was laid in just three days."

James Carmichael, Applicator at Lasercroft Ltd



ARDEX aces renovation



MCDONALD'S
UK & INTERNATIONAL

A huge tiling re-fit of all UK restaurants

over a 5 year program. The successful “partnership approach” produced the ideal tile fixing recommendation which is now being rolled out to McDonald's branches around the world.

Products used: ARDEX DGR, ARDEX ARDURAPID A 45, ARDEX P 4, ARDEX X 77, ARDEX X 78 S, ARDEX-FLEX FL

Contractor: Multiple



McDONALDS UK & INTERNATIONAL



ARDEX UK has been appointed by the world's largest family restaurant chain, McDonald's, to supply a tile fixing solution for the re-fit of all of their UK restaurant locations. ARDEX demonstrated to McDonald's their expertise of large scale 'roll out' refurbishment programmes, and the need for consistent product performance, with the provision of specialist technical support, both on and off-site.

ARDEX proposed an efficient cost and labour saving 'tile on tile' solution and provided several product demonstrations at ARDEX UK headquarters to the McDonald's team, as well as the appointed tiling contractors. Each refit commences with the existing wall and floor tiles being cleaned with ARDEX DGR Degreaser. Any damaged tiles are removed, and the areas patch

repaired using ARDEX ARDURAPID A 45 Rapid Hardening and Drying Internal Repair Mortar, which is ready to receive tiles in only 90 minutes.

The wall system continued with ARDEX P 4 Primer, followed by ARDEX X 77 MICROTEC Flexible Floor & Wall Tile Adhesive. ARDEX X 77 offers an extended 60 minute open time, and its advanced slump resistant formulation prevents slippage and movement; crucial factors in applying wall tiles quickly and efficiently.

For the floors, ARDEX P 4 Primer was specified in conjunction with ARDEX MICROTEC X 78 S Ultra Rapid Setting Floor Tile Adhesive. It has a semi-pourable consistency that makes it ideal for solid bed fixing large format floor tiles, and can be walked on and grouted after only 90 minutes.

"We are very pleased to be working with ARDEX on our UK restaurant refit programme. We were impressed by their 'partnership approach' to the entire project, and their immediate understanding of what was needed was exceptional, resulting in the ideal tile fixing recommendation".

Paul Elwin, Senior Contracts Manager of McDonald's UK



68 Million daily customers worldwide



SAVOY HOTEL
LONDON

£220m restoration project

"ARDEX have developed a range of tile fixing products that exceed expectations, and enabled us to maintain our reputation for excellence. We were delighted with the results at The Savoy".

Rafi Mimoni, MD Mega Marble

Products used: ARDEX A 35, ARDEX X 7001 W,
ARDEX S 16 W, ARDEX E 90

Contractor: Mega Marble Limited

SAVOY HOTEL LONDON



ARDEX A 35
Ultra Rapid Drying
Cement for Internal
Screeds

ARDEX X 7001 W
MICROTEC Rapid
Drying Pourable
Floor Tile Adhesive

ARDEX S 16 W
Rapid Drying Natural
Stone Wall & Floor
Tile Adhesive

ARDEX E 90
Mortar Admix

ARDEX UK were delighted to work in partnership with Mega Marble Limited, one of the UK's leading specialist fabricators and installers of Natural Stone and Quartz, to assist with the completion of the vast £220million restoration of London's iconic Savoy Hotel.

Mega Marble sourced, fabricated and installed a selection of their luxury marble and stonework throughout the public areas within the hotel, including the River Restaurant, Beaufort Bar, Thames Foyer, Upper Thames Foyer, Front Hall, Reading Room, cloakrooms and lift cars.

To commence the prestigious project, ARDEX A 35 Ultra Rapid Drying Cement was used to screed the floor areas. Proven throughout many

commercial installations, this saved months of drying that would have been required for ordinary portland cement screeds. ARDEX X 7001 W Rapid Drying Flexible Floor Tile Adhesive was used to fix the floor tiles, with its Rapidry Formula virtually eliminating the possibility of moisture staining affecting the intricate black and white marble tiles of the famous Front Hall.

ARDEX S 16 W Rapid Hardening and Drying Natural Stone Adhesive with ARDEX E 90 Admix was used to fix the Carrara marble wall tiles, which could be grouted only 2 hours after fixing.

"We work on many of the UK's most prestigious hotels, and our luxury marble and stonework products demand the very best in terms of adhesives. ARDEX have developed a range of tile fixing products that exceed expectations, and enable us to maintain our reputation for excellence. We were delighted with the results at The Savoy".

Rafi Mimoni, Mega Marble



Luxury landmark hotel



ROYAL BANK OF SCOTLAND
EDINBURGH

The synergy of ARDEX

products was the only solution to protect the original Grade II listed tiles from the installation of 24 tonnes of moisture sensitive granite slabs to the new floor.

Products used: ARDITEX NA, ARDEX Decoupling Mat, ARDEX X 32, ARDEX MG

Contractor: A. Andrews & Sons (Marbles & Tiles) Ltd, The Fraser Bruce Group

ROYAL BANK OF SCOTLAND EDINBURGH



ARDITEX NA
Ultra Rapid Setting
Latex Subfloor Levelling
and Smoothing
Compound

ARDEX X 32
Rapid Drying Natural
Stone Wall & Floor
Tile Adhesive for
Interior & Exterior Use

ARDEX MG
Rapid Drying Marble
and Natural Stone
Grout

The Royal Bank of Scotland brand has been present on Scottish high streets for nearly 300 years, and the iconic St Andrew Square branch has played a unique part in the bank's heritage since 1835. Doubling up as the bank's headquarters, it sees thousands walk through its reception every year, and the entrance area required an extensive renovation.

The project was not short on complexity – Grade II listed tiles were under the previously carpeted flooring, and these had to remain in place and intact. To protect the tiles, and to ensure that further renovations in the future would be more straightforward, ARDEX Decoupling Mat was used to

provide separation between the new and old tiles whilst being able to deal with the high footfall from customers.

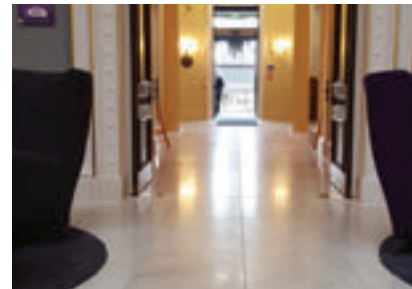
ARDEX X 32 Rapid Drying Natural Stone Wall and Floor Tile Adhesive was the only product capable of dealing with the thickness and heaviness of the granite slabs, whilst handling the moisture sensitivity of natural stone. ARDEX MG Tile Grout was also used for this purpose, as it virtually eliminates the risk of water staining, also known as 'picture framing' on tile edges.

"The fast-drying properties of several ARDEX products were especially important due to the strict timeframe of the project, in order to minimise disruption to RBS customers. For example, ARDEX X 32 was a key product for this renovation, as the adhesive is rapid-drying to the extent that it can be walked on and grouted in as little as three hours after fixing."

Adrian Ashby, Business Development Manager of PANDOMO® UK at ARDEX UK Ltd



Multiple challenges, one solution



RANSOMES DOCK APARTMENTS
LONDON

PANDOMO®

provided the unique subtle character
of polished concrete combined with a
seamless, hardwearing floor finish.

Products used: ARDEX A 38, PANDOMO® Floor,
ARDEX R 3 E, ARDEX EP 2000,
ARDEX P4, ARDEX K 80

Contractor: The Flooring Co Ltd, Artstone Concrete

RANSOMES DOCK APARTMENTS LONDON

RESIDENTIAL



Located next to Albert Bridge, just West of Battersea Park, Ransomes Dock is situated on the River Thames. Two luxury three-bedroom apartments, in this architecturally impressive former industrial warehouse, were recently renovated to the highest specification.

Greg Stubberfield from contract flooring specialists, The Flooring Co Ltd, used the full ARDEX floor system with a bespoke PANDOMO® finish.

The PANDOMO® range creates a decorative, seamless and very hard wearing surface for floors. The diversity of PANDOMO® offers designs ranging from classical, contemporary, urban and vibrant, or a truly custom style where only your imagination is the limit.

Artstone Concrete, specialists in decorative concrete interiors, utilised the properties of PANDOMO® to provide a modern distressed concrete finish to the columns and soffits. James Liversedge, the director of Artstone Concrete, turned to PANDOMO® to retain the original industrial warehouse feel, while achieving an elegant and luxurious hi-spec finish.

ARDEX A 38 Ultra Rapid Drying Cement for Internal & External Screeds, was used as the subfloor base. Where standard sand and cement screeds can take months to dry, ARDEX A 38 can be walked on in 3 hours, and receive ceramic and natural stone tiles after 4 hours, and all other floorcoverings after only 48 hours, regardless of thickness.

“Renovated to the highest specification, these bespoke loft style interiors harness an exquisite combination of the industrial and the organic, creating a sumptuous and elegant finish. This stylish apartment in a former warehouse offers a rarely available style.”

Rightmove.co.uk



From industrial warehouse on the Thames to luxury apartments of the highest specification



NORTH MANCHESTER GENERAL
HOSPITAL
MANCHESTER

Demanding environments

require a proven system. This 1800m² Accident and Emergency department was refurbished with cost effective, fast track products from ARDEX, to the total satisfaction of the client.

Products used: ARDEX DPM 1 C, ARDEX K 11,
ARDEX AF 100

Contractor: PCS Flooring

NORTH MANCHESTER GENERAL HOSPITAL MANCHESTER



ARDEX DPM 1 C
One Coat Surface
Damp Proof
Membrane



ARDEX K 11
Rapid Hardening
Levelling and
Smoothing Compound



ARDEX AF 100
Pressure Sensitive
Acrylic Flooring
Adhesive



ARDEX P 82
Water Dispersed
Epoxy Primer

In 2012 North Manchester General Hospital underwent the refurbishment of their busy Accident & Emergency department. In order to fulfil the flooring requirements of high footfall, the hospital drew upon the proven results of ARDEX UK, and flooring contractor, PCS Flooring of Formby, Merseyside, to ensure that their specific flooring needs could be met.

To commence the 1800m² project, the floor areas received a coating of ARDEX DPM 1 C Surface Damp Proof Membrane, which has been tried and tested throughout many commercial installations to deliver rapid and cost effective results. Developed for use as a one coat system, ARDEX DPM 1 C can accommodate hygrometer readings up to 98% RH.

Following the application of ARDEX P 82 Primer to the cured DPM,

ARDEX K 11 Levelling and Smoothing Compound was applied to provide a smooth and flat surface. It was dry enough to walk on only 2½ hours after application, and ready for the final floor coverings.

To finish the installation, ARDEX AF 100 Pressure Sensitive Acrylic Flooring Adhesive was used. Designed and tested with the professional installer in mind, ARDEX flooring Adhesives guarantee the long term performance required in demanding environments.

"It was essential that we provided a cost efficient, fast track solution for this refurbishment project. By using a total system solution from ARDEX, we had peace of mind from start to finish, and completed the installation to the total satisfaction of our client."

Mark Hughes, PCS Flooring



Complete system solution provides
total satisfaction



AINTREE HOSPITAL NHS FOUNDATION TRUST LIVERPOOL

This extensive

9,000m²

new build project, covering 4 key operating theatres, two treatment rooms, assessment units, a discharge ward and an admission department, benefitted from a full ARDEX flooring system.

Products used: ARDEX DPM 1 C, ARDEX P 82,
ARDEX K 11

Contractor: PCS Flooring

AINTREE HOSPITAL NHS FOUNDATION TRUST LIVERPOOL



ARDEX DPM 1 C
One Coat Surface
Damp Proof
Membrane



ARDEX P 82
Water Based Epoxy
Primer and Bonding
Agent



ARDEX K 11
Rapid Hardening
Levelling and
Smoothing Compound

ARDEX are regularly relied upon by the NHS to deliver cost effective, performance led flooring solutions for their varied locations within the UK, whether it be for hospitals, clinics, or laboratories. One such project saw ARDEX team up with flooring contractor, PCS Flooring, to complete the flooring for an extensive new build project at the Aintree Hospital NHS Foundation Trust.

To commence the 9000m² project, ARDEX DPM 1 C Surface Damp Proof Membrane was applied to the floor. Developed for use as a one coat system, it is easy to apply, fast curing and can accommodate hygrometer readings up to 98% RH.

ARDEX P 82 Primer was then applied to the cured DPM, followed by ARDEX K 11 Levelling and Smoothing Compound to provide a smooth and flat surface. ARDEX K 11 is a cost effective solution for levelling and smoothing subfloors, and is walkable in 2½ hours, and ready to receive floorcoverings the next day.

“When under pressure, no other flooring systems can match the reliability and proven performance of ARDEX. Their products delivered outstanding results for this prestigious project, along with peace of mind from the outset.”

Mark Hughes, PCS Flooring



“As predicted, ARDEX products delivered outstanding results for this prestigious project”



BIRMINGHAM CHILDREN'S HOSPITAL
BIRMINGHAM

ARDITEX NA

was chosen for its versatility, and ability to cover problem subfloors with minimal preparation, ensuring disruption to the hospital and its patients was kept to a minimum.

Products used: ARDITEX NA

Contractor: Pinnacle Flooring Ltd

Main Reception

Welcome to
Birmingham Children's Hospital

Give our Children a world class Cancer Centre

TEXT
70070



Our brave faces deserve the best places
TEXT 'BEST05 £5' to 70070
or visit www.bchcharity.org
Give our Children a world class Cancer Centre

BIRMINGHAM CHILDREN'S HOSPITAL BIRMINGHAM



ARDITEX NA
Ultra Rapid Setting Latex
Subfloor Levelling and
Smoothing Compound

Birmingham Children's Hospital was founded in 1862, and now offers the widest range of child health services for young patients in the West Midlands and beyond. The hospital is renowned for its excellence in providing outstanding care and treatment to its patients. With over 257,000 patients a year, 360 beds and 3,500 staff, the hospital is inundated with visitors and therefore required a much needed refurbishment to its main entrance, lobby and cafe.

Pinnacle Flooring Ltd was the chosen flooring contractor and they worked with Karndean, the floorcovering supplier, as part of their 40th birthday celebrations to supply and fit the flooring. Both companies worked with ARDEX and donated their services and products for free to support

the hospital and its patients. Chris Jennings, Director at Pinnacle Flooring Ltd, said, "Due to the outstanding work carried out by the hospital, we were keen to deliver excellent products and services. Karndean were able to supply the flooring and Pinnacle could fit it, however we were in need of a levelling compound that would allow us to complete the project in the short time frame given."

Ricky McNamara, ARDEX Area Sales Manager, explained, "After visiting the site, it was clear that the product needed to be versatile, rapid setting, and be able to cover problem areas on the floor, in order to guarantee minimal disruption to the hospital and its patients. ARDITEX NA was the perfect solution."

"We were impressed with the efficiency of ARDITEX NA. Like many refurbishments, adhesive residue from the previous floorcoverings were still present, but we were able to apply ARDITEX NA without the need for any priming or mechanical preparation, and therefore completed the project swiftly."

Chris Jennings, Director of Pinnacle Flooring Ltd



ARDEX undertakes charity project for Birmingham Children's Hospital



LOUGHBOROUGH COLLEGE
LOUGHBOROUGH

Each floor posed a different challenge

during the refurbishment of this 1960s building. Some substrates contained bitumen, or old adhesive residues, whilst others had uneven and damaged concrete with rising damp. ARTIDEX NA was the only choice, as it covers all subfloors without the need to prime, and ARDEX DPM 1 C provided the ultimate moisture control solution.

Products used: ARTIDEX NA, ARDEX DPM 1 C

Contractor: McKenna Flooring Ltd

LOUGHBOROUGH COLLEGE LOUGHBOROUGH



ARDITEX NA
Ultra Rapid Setting
Latex Subfloor
Levelling and
Smoothing Compound



ARDEX DPM 1 C
One Coat Surface
Damp Proof
Membrane

Loughborough College was established in 1909, with a proud and long standing reputation for providing excellent levels of high quality teaching and training across Leicestershire.

With a £14.1million refurbishment plan, McKenna Flooring was selected to undertake the flooring project, and Scott McKenna from McKenna Flooring commented, "The work on-site involved the complete renewal of the whole of the building, including the college's original 1960s multi-storey building, 35 revamped classrooms, new science labs, IT rooms and flexible learning spaces."

With the project came two major issues to address, the first of which was dealing with the damp floor. Buildings constructed before

1970 weren't required by building regulations to include a structural damp proof membrane, and all of the walls and windows had been stripped out completely, exposing the floors to the elements in winter. As a result, the floors were very wet, and moisture readings confirmed the need for a damp proof membrane for protection against ground bearing moisture.

Scott McKenna said, "The second issue was the condition of the subfloors, as each presented a different challenge. Some contained traces of bitumen or old adhesive residues, many had uneven and damaged concrete, and some areas were tiled with ceramics. Ideally we needed a product that could level and smooth all of these subfloors, with minimal preparation and in the shortest possible time."

"ARDITEX NA was the only product for the job, as it covered all of the subfloors we were working on and without the need to prime, saving us time and money. ARDITEX NA is moisture tolerant, so we were able to apply a pre-smoothing layer direct to the damp subfloor, before applying ARDEX DPM 1 C. This allowed us to get the best coverage from the DPM, before applying a final layer of ARDITEX NA."

Scott McKenna, McKenna Flooring Ltd



**"ARDITEX NA was the only product
for the job"**



MEARNS CASTLE HIGH SCHOOL GLASGOW

The combination of a

rapid drying damp proof membrane

and levelling and smoothing compound, enabled contractors to tackle the damp floor confidently, and complete the entire refurbishment over the half term holiday period.

Products used: ARDITEX NA, ARDEX DPM 1 C

Contractor: The Fraser Bruce Group

MEARNS CASTLE HIGH SCHOOL GLASGOW



ARDITEX NA
Ultra Rapid Setting
Latex Subfloor Levelling
and Smoothing
Compound

ARDEX DPM 1 C
One Coat Surface
Damp Proof
Membrane

Mearns Castle High School, situated on the outskirts of Glasgow, was founded and built in 1978. The award-winning school has 1,352 students and 122 staff, and due to its established reputation, the school recently invested in extra classrooms and learning facilities. However, during the refurbishment, damp was found in the flooring of the older part of the building, which had a detrimental effect on the floorcovering. This is likely to occur in older buildings, where the installation of an effective structural damp proof membrane was not a requirement of the building regulations at the time of the build.

Specialist contractors, The Fraser Bruce Group, were appointed to lead the project, and Director,

Jamie Bruce, commented “We have worked with ARDEX regularly over the past couple of years, on projects such as JD Sports and the London Underground Network. Once again we wanted to utilise not only their high performance products, but their specification knowledge and technical advice.”

The project was completed over the Easter holiday period, giving ARDEX and the contractor 2 weeks to recommend a solution and carry out the work before the school reopened. With the existing floor being damp and uneven, time was saved using the combination of ARDITEX NA and ARDEX DPM 1 C.

“The combination of a rapid-drying damp proof membrane and levelling and smoothing compound enabled us to tackle the damp floor confidently, and complete the entire refurbishment within a tight time frame. This was only achievable due to the reliability and performance of ARDEX products.”

Jamie Bruce, Director of The Fraser Bruce Group



Top Scottish state school no longer plagued by rising damp



PETERBOROUGH REGIONAL COLLEGE PETERBOROUGH

“ARDEX teamed up with one of East Anglia’s most established specialist flooring contractors to provide a

2,500m² fast track

refurbishment to the main reception, corridors and refectory. It was essential that the college remained operational throughout the refurbishment, and that the project was completed as quickly as possible.

Products used: ARDITEX NA, ARDEX DPM 1 C

Contractor: Superior Finish Contracts

PETERBOROUGH REGIONAL COLLEGE PETERBOROUGH



ARDITEX NA
Ultra Rapid Setting
Latex Subfloor Levelling
and Smoothing
Compound

ARDEX DPM 1 C
One Coat Surface
Damp Proof
Membrane

ARDEX UK were pleased to utilise their experience within the education sector by providing the ideal refurbishment solution for Peterborough Regional College. The College welcomes around 3,500 full time and 12,000 part time students through its gates, encompassing the widest range of courses in the Peterborough area.

ARDEX teamed up with one of East Anglia's most established specialist flooring contractors, Superior Finish Contracts of St Ives, Cambridgeshire, to provide a 2500m² fast track refurbishment to the main reception, corridors and refectory.

It was essential that the college remained open throughout the refurbishment, so it was vital to deliver efficient weekend operating

procedures which would allow the project to be completed as quickly as possible.

As part of their high levels of customer support, ARDEX took moisture readings of the subfloors, which ascertained an inherent level of dampness meaning they required a surface damp proof membrane. ARDEX DPM 1 C was specified to guarantee the early laying of the subsequent floorcovering, and to protect the installation from residual construction moisture and ground water vapour.

“We chose ARDEX flooring systems for several reasons; their proven experience in the education sector, their excellent technical assistance, and the assured reliability of their products. Where installations dictate strict time restrictions, the reliability of ARDEX is second to none.”

David Bufton, Superior Finish Contracts



“Where installations dictate strict time restrictions, the reliability of ARDEX is second to none.”



