



# ARDEX SUBFLOOR RECOMMENDATIONS FOR THE INSTALLATION OF LVT

Image courtesy of Lifestyle Floors



# FOR THE PERFECT FLOOR

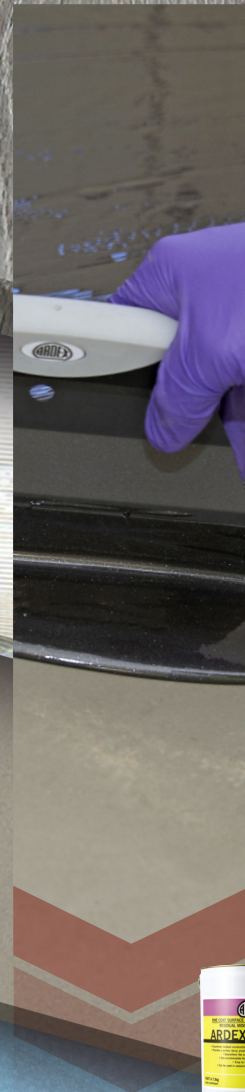
The ARDEX range of High Performance Flooring products have been developed, tested and approved to be fully compatible with today's most popular floorcoverings; offering the professional installer unique application benefits and guaranteed long term performance, helping to ensure the perfect installation every time.

## REPAIR



REPAIR MORTARS

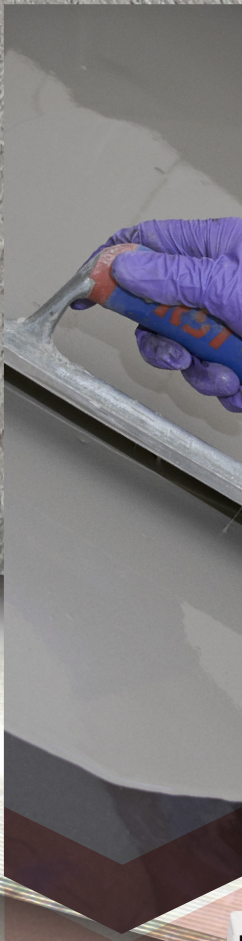
## PROTECT



MOISTURE CONTROL  
& PRIMING



## LEVEL & SMOOTH



## INSTALL



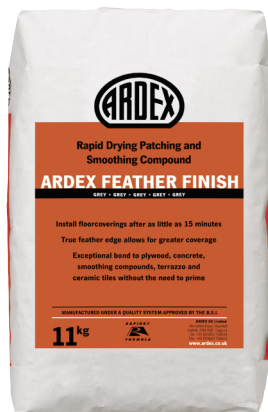
LEVELLING AND  
SMOOTHING  
COMPOUNDS



FLOORING  
ADHESIVES



# REPAIR MORTARS



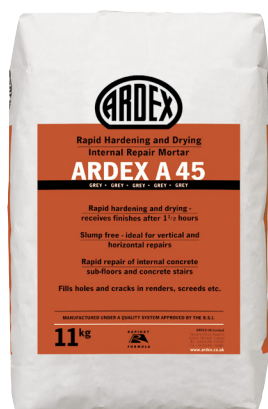
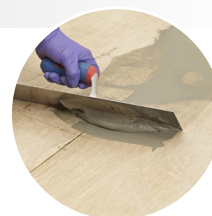
## ARDEX FEATHER FINISH

### Rapid Drying Patching and Smoothing Compound

- Floorcoverings can be installed after as little as 15 minutes
- True feather edge allows for greater coverage
- No priming required

Pack size: 5kg/11kg

Coverage: Approximately 50m<sup>2</sup> at 1mm



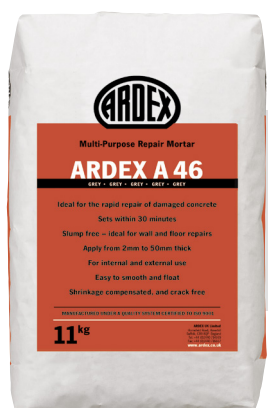
## ARDEX ARDURAPID A 45

### Rapid Drying Internal Repair Mortar

- Receives finishes after 90 minutes, regardless of thickness
- Priming rarely required
- Receives ARDEX Levelling Compounds immediately after application
- Slump free - ideal for vertical and horizontal repairs

Pack size: 11kg

Coverage: Approximately 7m<sup>2</sup> at 1mm



## ARDEX A 46

### Multi-Purpose Repair Mortar

- Ideal for patch repairs prior to the application of an ARDEX Damp Proof Membrane
- Fills cracks, gaps and holes up to 50mm deep
- Shrinkage compensated and crack free
- For internal and external use

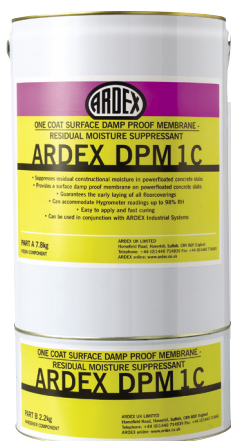
Pack size: 5kg/11kg

Coverage: Approximately 4m<sup>2</sup> at 2mm





# MOISTURE CONTROL AND PRIMING



## ARDEX DPM 1 C

### One Coat Surface Damp Proof Membrane

- Protects the floorcovering from residual construction moisture and rising damp
- Can be used where a structural DPM is not present or is ineffective
- Accommodates Hygrometer readings up to 98% RH
- Adheres to saturated concrete even at lower temperatures



Pack size: 6kg/10kg/25kg  
Coverage: 10kg unit up to 25m<sup>2</sup>

## ARDEX MVS 95

### One Component Residual Moisture Vapour Suppressant



- Protects the final floorcovering from residual construction moisture
- Can be used where a structural DPM is present with Hygrometer readings above 75% and below 95% RH
- Fast drying - apply smoothing compounds after 2 hours
- No priming required
- Ready for use, resealable and reusable



Pack size: 12kg  
Coverage: Up to 32m<sup>2</sup> (two coats)

## ARDEX P 51 PRIMER

### Water-Based Primer & Bonding Agent



- For use on dry floors prior to the application of a water-based levelling compound
- Minimises air bubbles rising through levelling compounds and porous surfaces
- Multipurpose - Suitable for a wide range of applications
- Easy to use, dilute as appropriate for the application



Pack size: 1kg/5kg/25kg  
Coverage: Refer to product datasheet



# LEVELLING AND SMOOTHING COMPOUNDS

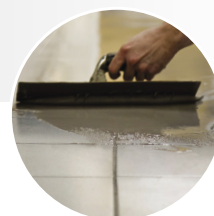
## ARDITEX NA

### Ultra Rapid Setting Latex Subfloor Levelling and Smoothing Compound



The Original Yellow Bag®

- Excellent adhesion without priming to almost all substrates
  - Bitumen Adhesive Residues
  - Ceramic Tiles
  - Old Adhesive Residues
  - Flooring Grade Plywood
- Unaffected by moisture, can be used under an ARDEX Damp Proof Membrane and direct to damp concrete
- Install floorcoverings in as little as 4 hours



Pack size: 20kg Powder & 4.85kg Latex

Coverage: Approximately 5m<sup>2</sup> at 3mm

## ARDITEX CL

### Latex Levelling and Smoothing Compound



- Ideal for new build projects
- Apply most floorcoverings after 12 hours
- Receives light foot traffic in as little as 2 hours
- Excellent flow and application properties

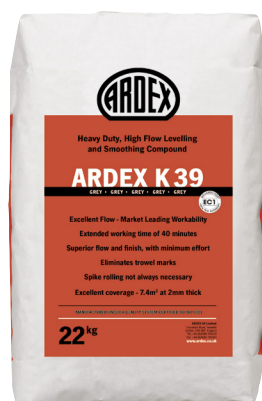


Pack size: 20kg Powder & 4.5kg Latex

Coverage: Approximately 5m<sup>2</sup> at 2-3mm

## ARDEX K 39

### Extended Workability, High Flow Levelling and Smoothing Compound



- Extended working time of up to 40 minutes
- Superior flow and finish, with minimum effort
- Eliminates trowel marks
- Walkable in 2 hours



Pack size: 22kg

Coverage: Approximately 7.4m<sup>2</sup> at 2mm



# FLOORING ADHESIVES

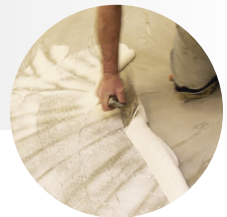


## ARDEX AF 175

### Luxury Vinyl Tile Adhesive

- Fibre reinforced, minimises lateral movement and adhesive squeeze during installation
- Install tiles and planks after 5 minutes
- Walk on after 2 hours
- High temperature resistance, suitable for use over underfloor heating systems

Pack size: 6kg / 12kg  
Coverage: Up to 48m<sup>2</sup>

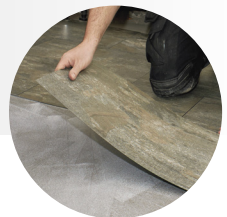


## ARDEX AF 145

### Pressure Sensitive Vinyl Adhesive

- Receives floorcoverings in as little as 20 minutes
- Can receive vinyl sheet up to 80 minutes after airing
- Can also be used as a wet set adhesive
- High temperature resistance, suitable for use over underfloor heating systems

Pack size: 12kg  
Coverage: Up to 48m<sup>2</sup>



## ARDEX AF 2575

### Heavy Duty Adhesive - One Component

- Zero waste, ready mixed and resealable
- Moisture, weather and water resistant
- High temperature resistance, ideal for use in areas of direct sunlight and with underfloor heating systems
- Suitable for internal and external use

Pack size: 7kg  
Coverage: Up to 23m<sup>2</sup>



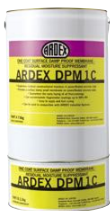




# REFURBISHMENT

Our refurbishment system is ideal for older properties with damp or contaminated floors. This system reduces the need for intensive preparation and priming.

Image courtesy of Lifestyle Floors



LVT FLOORCOVERING

ARDITE NA

\*ARDITE NA

FLOORING ADHESIVE

ARDEX DPM 1 C

CONCRETE FLOOR/  
CONTAMINATED  
FLOOR

\* An optional pre-smoothing layer of ARDITE NA can be applied prior to the installation of an ARDEX DPM to ensure it is applied in a cost effective, optimal layer.



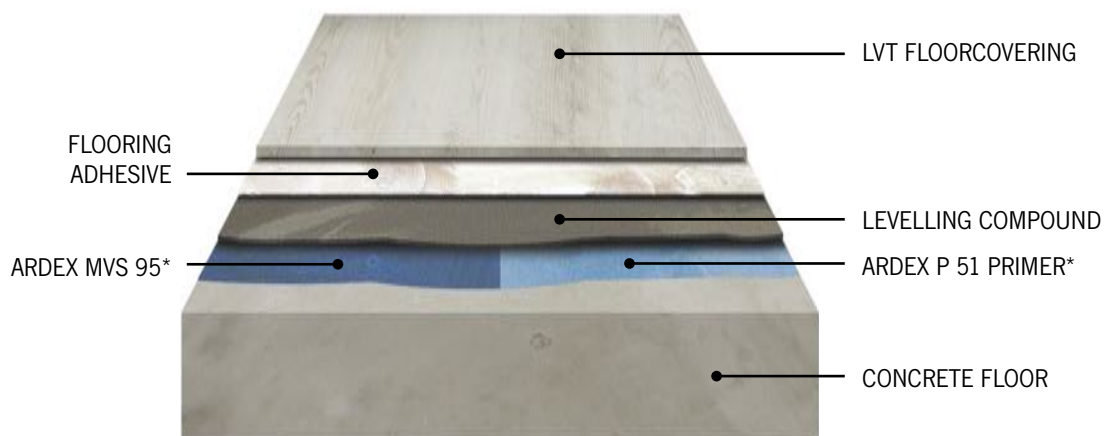
# NEW BUILD

We have two system recommendations for new build installations.

**Damp Floor:** If your floor has RH readings above 75% and below 95%, with a functioning structural damp proof membrane present, we recommend the use of ARDEX MVS 95.

**Dry Floor:** If your floor has RH readings below 75%, we recommend the use of ARDEX P 51 Primer.

Image courtesy of Lifestyle Floors



\* Product selection will depend on the RH readings of the floor.





# FLOORING GRADE PLYWOOD

If you are installing Luxury Vinyl Tiles over a suitable flooring grade plywood, ARDEX Feather Finish allows you to rapidly skim the plywood, and smooth between staggered sheets. ARDEX Feather Finish dries in as little as 15 minutes, ensuring a fast track LVT installation.

Image courtesy of Lifestyle Floors

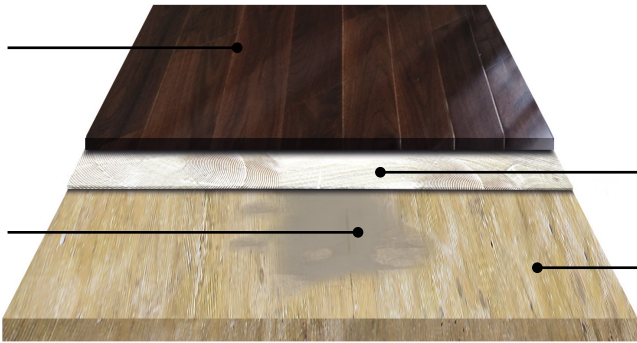


LVT FLOORCOVERING

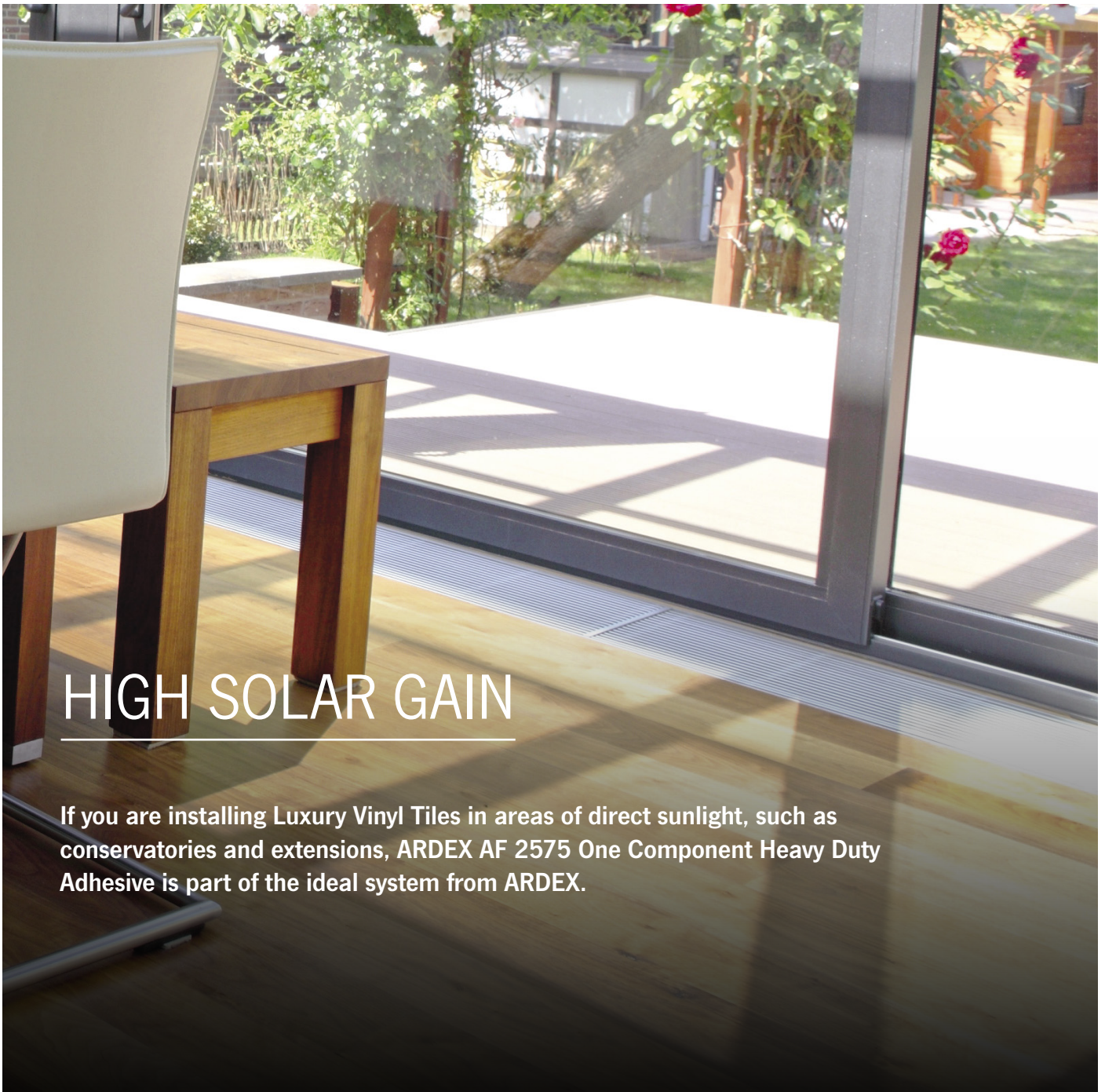
ARDEX FEATHER FINISH

FLOORING ADHESIVE

FLOORING GRADE PLYWOOD

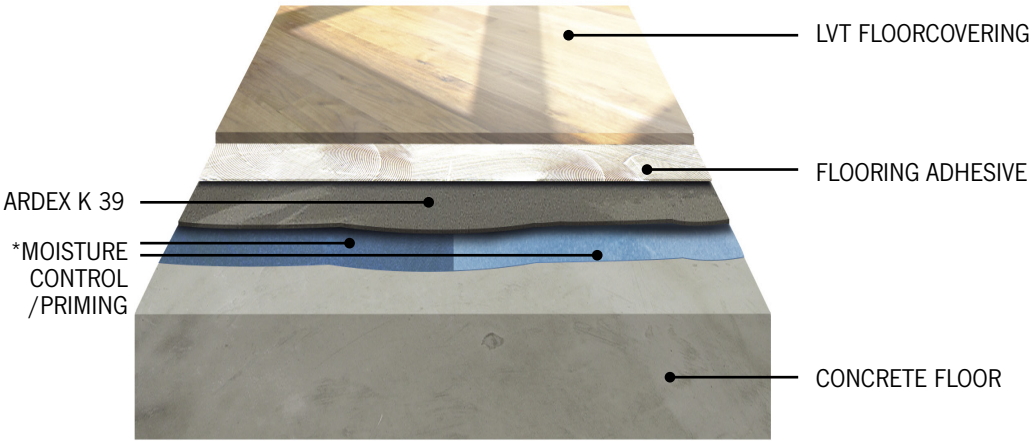






# HIGH SOLAR GAIN

If you are installing Luxury Vinyl Tiles in areas of direct sunlight, such as conservatories and extensions, ARDEX AF 2575 One Component Heavy Duty Adhesive is part of the ideal system from ARDEX.



\* Product selection will depend on the RH readings of the floor.



## INSTALLING OTHER FLOORCOVERING TYPES?

ARDEX Flooring Adhesives meet the requirement guidelines for the EMICODE licence 'EC1 PLUS', achieving the lowest possible, or very low emission limits.



PAGE	DESCRIPTION	PRODUCT	PACK SIZE	VINYL						LINOLEUM		
				LUXURY VINYL TILE AND PLANKS	LOOSELAY LVT	VINYL SHEET	CUSHIONED	COVING / SKIRTING	VINYL COMPOSITION TILE	JUTE / HESSIAN BACKED	POLYESTER BACKED SHEET	POLYESTER BACKED TILES
6	PRESSURE SENSITIVE VINYL	ARDEX AF 145	12kg	✓		✓	✓		✓			
8	VINYL	ARDEX AF 165	14kg			✓	✓					
10	LUXURY VINYL TILE	ARDEX AF 175	6kg/12kg	✓			✓		✓			
12	LOW EMISSION CARPET	ARDEX AF 325	14kg									
14	TACKIFIER	ARDEX AF 825	10kg		✓							
16	HEAVY DUTY (ONE COMPONENT)	ARDEX AF 2575 1K	7kg	✓		✓			✓			
18	HEAVY DUTY (TWO COMPONENT)	ARDEX AF 2525 2K	6kg	✓		✓			✓			
20	UNIVERSAL	ARDEX AF 2365	6kg/14kg	✓		✓	✓		✓	✓	✓	✓
22	SOLVENT FREE CONTACT	ARDEX AF 620	2.5kg	✓ ††		✓ ††	✓ ††	✓ ††	✓ ††	✓ ††	✓ ††	✓ ††
24	RUBBER	ARDEX AF 275	12kg									
26	LINOLEUM	ARDEX AF 785	14kg							✓	✓	✓



# ARDEX HAS THE SOLUTION

CARPET										CARPET TILES			UNDERLAY		RUBBER		
WOVEN	ACTIONBAC	GEL FOAM	NEEDLEPUNCH / FIBREBONDED	SECONDARY BACKED	FELT	LATEX	PVC	ARTIFICIAL GRASS	NATURAL FIBERS	BITUMEN BACKED	PVC	GEL BACKED	CARPET UNDERLAY		SHEET UP TO 4mm	TILES UP TO 4mm	TILES ABOVE 4mm
	✓	✓	✓	✓	✓	✓	✓		✓*								
									✓*	✓•	✓•	✓•	✓*				
								✓							✓	✓	✓
								✓							✕	✓	✓
	✓	✓	✓	✓	✓	✓	✓			✓•‡	✓•‡	✓•‡			✓∅		
	✓†‡	✓†‡	✕	✓†‡	✕		✓†‡			✓†‡	✓†‡	✓†‡			✓†‡	✓†‡	✓†‡
															✓	✓	

LEGEND: \* Double Stick † Permanent ‡ Vertical ✕ Contact Manufacturer • Release ∅ Up to 2.5mm





# KEY POINTS FOR THE INSTALLATION OF LVT

## PRODUCT CONDITIONING

Prior to the installation of luxury vinyl tiles or planks please refer to the manufacturer's guidelines on product condition. Failure to follow the product conditioning guidelines can result in shrinkage or lipping.

- Product conditioning should always take place in the area that will receive the installation.
- The tiles, planks and any other flooring accessories should be conditioned together for a minimum of 24 hours prior to installation.
- In line with BS 8203:2017 codes of practice, the room temperature should be between 18°C and 28°C, staying constant and not varying by more than 2°C.
- The product conditioning time should be increased to 48 hours where the luxury vinyl tiles or planks have been stored and/or delivered at colder temperatures, lower than 10°C.
- Areas subject to high solar gain such as conservatories, extension areas with bi-fold doors and windows, should be shaded or covered during the product conditioning period, installation period and for 24 hours after the installation.

## INSTALLATIONS WITH UNDERFLOOR HEATING

Underfloor heating systems should be commissioned in accordance with the underfloor heating manufacturer's instructions or follow the guidance given in BS 8203 and BS 8204.

- Underfloor heating systems should be switched off and fully cooled for a maximum of 48 hours prior to the installation of the final floorcovering. The system should remain off during the installation and for a minimum of 48 hours afterwards. It should then be slowly brought back up to the working temperature incrementally over several days.
- A maximum subfloor temperature, at the adhesive line of 27°C should never be exceeded. This is not room temperature.

Note: Thermal cycling of the subfloor will require raising the temperature of the substrate slowly, usually 10°C a day, to full operating temperature, held for a defined period, and slowly brought back down, usually 10°C a day, so that any shrinkage that is likely to take place occurs before the adhesive and final floorcovering is installed.



## ARDEX FLOORING ADHESIVE APPLICATION

- The ARDEX Adhesive should be applied evenly using the appropriate serrated trowel, held approximately at a 60-degree angle to the subfloor to maximise coverage and avoid forming pools of adhesive.
- Allowing the adhesive to air will help to reduce lateral slide and adhesive squeeze when installing luxury vinyl tiles or planks.
- Only apply sufficient adhesive that can be covered within the working time.
- Remove any air pockets with a cork board or rubbing tool whilst the adhesive is still wet and roll the flooring with a 68kg roller and/or a smoothing tool. Roll from side to side first and then end to end. Rolling will ensure good overall contact and minimise the potential for adhesive serration grin through.
- In areas subject to high solar gain or extreme fluctuations in temperature, ARDEX recommends the use of ARDEX AF 2575 Heavy Duty Adhesive.

## ADHESIVE INSTALLATION SCHEDULE

The example below is based on the ARDEX AF 175 LVT Flooring Adhesive.



Times dependent on the absorbency of the subfloor and site conditions.

### LEGEND

#### AIRING TIME

The time the adhesive must be left open before applying the floorcovering.

#### WORKING TIME

The time in which the adhesive can receive the floorcovering, after the initial airing time.

#### OPEN TIME

The combination of airing and working time.

## SETTING OUT YOUR LUXURY VINYL TILES OR PLANKS

For setting out the installation of the luxury vinyl tiles or planks please refer to the manufacturer's guidelines.

## CODES OF PRACTICE

Site conditions should be prepared in accordance with British Standards BS 8203:2017 Code of practice for installation of resilient floorcoverings.

Image courtesy of Lifestyle Floors

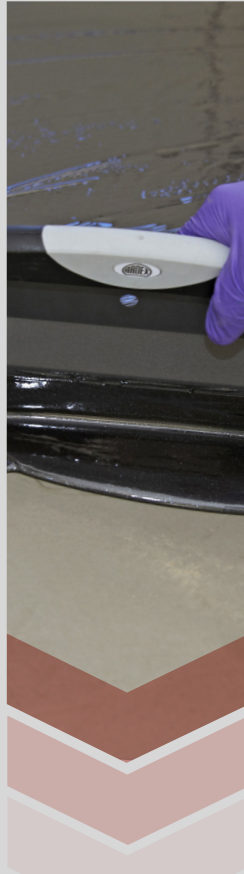


## REPAIR



REPAIR MORTARS

## PROTECT



MOSITURE CONTROL  
& PRIMING

## LEVEL & SMOOTH



LEVELLING AND  
SMOOTHING  
COMPOUNDS

## INSTALL



FLOORING ADHESIVES



ARDEX UK Limited  
01440 714939

 @ARDEXUKFlooring  
info@ardex.co.uk

 ARDEX UK  
www.ardex.co.uk

 ARDEX UK