



CI/SfB

(43)

Yq2

JANUARY 2023

PRODUCT DATA SHEET

ARDEX INDORTEC FLEXBONE MATTING - VA

**Advanced, high load-bearing uncoupling
membrane for substrates with limited movement**

Features

- Fast-track system: easy filling of bone shaped GripLock Technology and tiling can be carried out immediately after laying the membrane.
- Excellent adhesive shear strength: 50% better than other cavity uncoupling mats in independent tests.
- Excellent tensile strength: stops tiles 'popping-off'/ cracking under pressure.
- Water vapour pressure compensating: a fleece laminated to the underside compensates for water vapour pressure.
- Waterproof: can be used in internal wet areas.
- Can be stored for approx. 48 months in dry rooms, away from direct sunlight.



Reg No. FM 01207

EMS 565427

OHS 628374

ARDEX UK LIMITED

Homefield Road, Haverhill, Suffolk CB9 8QP UK.

Telephone: +44 (0)1440 714939

Fax: +44 (0)1440 716640

Email: info@ardex.co.uk

ARDEX online: www.ardex.co.uk

ARDEX INDORTEC FLEXBONE MATTING - VA

Advanced, high load-bearing uncoupling membrane for substrates with limited movement

DESCRIPTION

ARDEX Indortec Flexbone Matting – VA is a high load bearing, waterproof, uncoupling membrane. Accommodates lateral movements for tile installations on floors with limited movement. Used as a system with an appropriate ARDEX flexible cementitious adhesive.

USE

Ideal for the installation of large format ceramic and porcelain tiles, slabs & natural stone with a minimum edge length of 100mm. Counteracts and therefore minimises tension stresses between the substrate and the floor to be installed. Prevents reflective cracking caused by shrinkage cracks, board joints and lateral movement. Provides crack bridging and allowing a safe installation onto challenging substrates. Suitable for internal flooring; renovation and new construction, domestic and commercial areas in medium/heavy duty applications. Suitable for use in most internal floor areas including bathroom and kitchen. Recommended for heated floors, new cement screeds, concrete timber floors and existing floor surfaces.

Restrictions: NOT suitable for

- Exterior environments
- Substrates with deflection (vertical movements).
- Use on parquet flooring.
- Bridging movement joints.
- Use with agglomerated stone tiles that exhibit a tendency to curl. Seek further guidance from the tile manufacturer.

SURFACE PREPARATION - General

Ensure surfaces to be tiled are flat to SR1 tolerance as recommended in BS 5385-3. Substrates must be clean, dry, sound and free from contamination and stable enough to receive tiling.

The surface must be levelled to SR1 prior to installation. Uneven surfaces must be primed and levelled with ARDEX primers and levelling compounds such as ARDITEX NA, ARDEX K 40 FLOW or ARDEX K 40 HB as appropriate for the sub floor prior to the installation of ARDEX Indortec Flexbone Matting – VA using a suitable ARDEX Flexible cement-based adhesive.

Always ensure the correct adhesives and grouts are selected for the installation.

ARDEX Indortec Flexbone Matting – VA can be used in internal wet floor areas, including high load-bearing areas such as airports, car showrooms and shopping centres.

IMPORTANT NOTE: Do NOT install ARDEX Indortec Flexbone Matting – VA or tiles in temperatures below 5°C.

Type of Floor Material	Minimum Size	Minimum Thickness
Ceramic	100 mm x 100 mm	10mm
Porcelain	100 mm x 100 mm	8 mm
Natural Stone	100 mm x 100 mm	15 mm

Contact ARDEX TECHNICAL ADVISORY AND SPECIFICATION SERVICE for further advice on other materials.

GENERAL PROPERTIES AND AREAS OF APPLICATION

ARDEX Indortec Flexbone Matting – VA absorbs the lateral movement tensions from the substrate and bridges stress cracks to prevent movement being transferred to the surface covering. Its resistance to stresses should be examined separately based on the expected concentration, temperature and exposure time.

ARDEX Indortec Flexbone Matting – VA can be used in a broad range of installations; however, its suitability for specific mechanical conditions must be evaluated for each individual case. As some general guidelines ARDEX Indortec Flexbone Matting – VA can be applied to:

Tongue and Grooved Timber/Single Layer Plywood

Ensure boards are flat (SR1) dry, rigid and securely fixed (screwed to joints at 300mm centres, including any cross-noggins, if necessary). Sand (abrade) surface and ensure any surface coatings removed, e.g. varnish, lacquers, etc.

Ahead the ARDEX Indortec Flexbone Matting – VA using ARDEX AF 200 PLUS Uncoupling Matting adhesive, using a B1 or 2mm x 6mm V-shaped notched serrated trowel in accordance with the product data sheet.

APPLICATION AREAS

Leisure Centres	✓
Bathrooms	✓
Changing Rooms	✓
Car Showrooms	✓
Domestic Kitchens	✓
Shopping Malls	✓
Heated Floors	✓
Wet Rooms	✓

Fibre reinforced cement boards and lightweight tile backer boards

Install boards to BS 5385 – i.e. moisture-resistant boards such as BAL BOARD and screw to seasoned timber joists or as per the board manufacturer's recommendations (see BAL TECHNICAL DATA SHEET on BAL BOARD for further information). Ensure no fixings protrude.

Some boards may require priming, prior to adhering the ARDEX Indortec Flexbone Matting – VA with a cementitious based tile adhesive. Use a suitable primer from the ARDEX range such as ARDEX P 51. Please refer to the ARDEX TECHNICAL DATA SHEETS for further information. IMPORTANT NOTE: Obtain manufacturer's confirmation that boards are suitable for the tiling application and for relevant fixing instructions.

Existing vinyl tiles

Please refer to ARDEX Indortec Flexbone Matting - 2E data sheet.

Existing glazed/unglazed ceramic tiles, quarry tiles, terrazzo and natural stone

Ensure that the existing finish is firmly adhered to the base. If areas are loose or hollow-sounding, remove, prepare the floor with ARDEX A 46 or for more substantial depths make good with ARDEX A 38 screed over a bonding coat of ARDEX A 18. Install the matting after 4 hours at 20°C with the appropriate ARDEX cement based adhesive.

Concrete and Cement and Sand Screeds

Concrete can receive the matting when it is load bearing. An OPC cement and sand screed can receive the matting when it is load bearing. With an ARDEX A 38 screed the matting can be installed after 4 hours at 20°C with the appropriate ARDEX cement based adhesive. Use ARDITEX NA, ARDEX K 40 FLOW or ARDEX K 40 HB as appropriate for the subfloor.

Calcium Sulfate/Anhydrite (Gypsum)Based Screeds

Allow the screed to dry out in accordance with manufacturer's instruction, example: moisture content below 0.5% w/w or 75% RH (Relative Humidity). Mechanically remove top surface to remove weak/dusty surface layer(s) as per the screed manufacturer's recommendations. Remove all dust and loose material e.g. by vacuum etc. before priming with ARDEX P 51 Primer diluted 1:3 with clean water, applied by brush or broom and allow to dry. Install the matting with the appropriate ARDEX cement based adhesive.

NOTE: For further information on other backgrounds and preparation, contact ARDEX TECHNICAL ADVISORY AND SPECIFICATION SERVICE.

Mastic Asphalt (Internal Grade)

Before tile fixing commences the asphalt base should be examined to ensure that it is in a suitable condition to receive tiles; in particular, it should have adequate cohesive strength and should be laid on a firm and rigid base. Sand rubbed surfaces should be carefully examined to ensure all loose sand or debris is completely removed from the surfaces prior to the commencement of tiling. The Asphalt must be level i.e. to SR1 tolerance before application of ARDEX Indortec Flexbone Matting – VA. Sand rubbed surfaces can receive the appropriate ARDEX adhesive directly, smooth asphalt will initially need priming with ARDEX P 82 Primer. Remove loose or damaged tiles/ areas of sheet along with any loose or soft adhesive. Remove any polishes, wax, grease etc. with a suitable proprietary cleaner.

NOTE: Cushioned types of flooring are not suitable and must be completely removed along with the adhesive residue prior to tiling.

Heated Cement and Sand Screeds

Allow cement and sand screeds to dry for a minimum of 3 weeks (at 20°C) and ensure they are conditioned in accordance with BS requirements

Please refer to the ARDEX A 38 CEMENT data sheet for typical drying times. All dirt, dust laitance must be removed using suitable mechanical methods followed by use of suitable vacuuming equipment. If levelling is required, use ARDITEX NA. Allow to dry before installing ARDEX Indortec Flexbone Matting – VA.

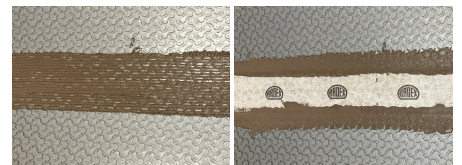
Ensure that the underfloor heating system has been correctly pressurised and fully commissioned in line with British Standards requirements.

Undertile Floor Heating

Can be used onto electrical undertile heating systems encased with ARDITEX NA over suitable boards, such as BAL BOARD or proprietary thermal tilebacker boards or other suitable ARDEX levelling systems. Please consult the Technical Datasheet for the relevant product prior to installation. Allow to dry before installing ARDEX Indortec Flexbone Matting – VA.

APPLICATION

1. The substrate must be even and load bearing.
2. If necessary, the floor may require priming or levelled using a suitable ARDEX Smoothing and levelling compound as above.
3. Roll out the ARDEX Indortec Flexbone Matting – VA from the corner and cut them precisely to the required length and sizes as required for the floor. Trim off any excesses around up-stands using scissors or a utility knife. Note: Leave a 6mm movement joint around the perimeter or use ARDEX Aquadrain Edge foam strip for ease.
4. Apply a thin bed of a suitable ARDEX flexible tile adhesive to bond the ARDEX Indortec Flexbone Matting – VA which is appropriate for the substrate to be tiled. Use a 4mm x 4mm toothed and notched trowel. If using ARDEX AF 200 PLUS apply in accordance with the product data sheet.
5. Roll back and lay the ARDEX Indortec Flexbone Matting – VA into the freshly applied ARDEX flexible tile adhesive. The mat must be fully engaged into the adhesive to provide a suitable bond and applied within the open time of the adhesive. If the adhesive has started to skin or set, remove this layer of adhesive and re-apply a fresh layer.
6. To ensure full adhesion is achieved between the ARDEX Indortec Flexbone Matting – VA and the ARDEX flexible tile adhesive, smooth out the matting using either the flat edge of a steel trowel or a suitable float. Eliminate any air pockets.
7. Where additional rolls / membrane is needed on the floor, ensure the separate mats are butt jointed at the edges but not overlapped. Remove any excess tile adhesive which may have squeezed through the joints. N.B The matting must always be separated where a change in substrate occurs or a construction/movement joint is present in the background. Continue the movement joint through to the tiled finish. Leave the adhesive to harden.
8. If waterproofing is required, and if the matting is to be applied to a damp substrate apply ARDEX SK-12 tape. This should be adhered with ARDEX WPC Grey to an area approximately 20mm wider on either side of the tape to be used using a 4mm x 4mm toothed and notched trowel over all ARDEX Indortec Flexbone Matting VA membrane edges, joints and roll ends to ensure a waterproof seal over the surface. The ARDEX SK-12 tape should be applied into the freshly applied ribbed bed of the ARDEX WPC and pressed in to expel any air with the flat side of a trowel. Any overlapping tapes should be a minimum of 60mm and adhered to each other as above. Corner joints, pipe outlets etc should be waterproofed with ARDEX SK-90, ARDEX SK-270 or ARDEX SK-M 15/30 or SK-M 40/65 Tapes as appropriate. A 10kg unit of ARDEX WPC will cover approximately 20 linear metres using a 4mm x 4mm toothed and notched trowel. Tile fixing can commence after the application of the ARDEX WPC/ARDEX SK Tape has been left to harden overnight.



9. To apply tiles, mix and apply the adhesive to the mat using a suitably sized notched trowel. Ensure the final adhesive bed thickness does not exceed 6-8mm.
10. If an ARDEX flexible rapid-setting cementitious based adhesive is used the tiles/ARDEX SK tapes can be applied immediately. The adhesive consumption requirement to fill the bone shaped cavities is an extra 1.5mm adhesive bed per square metre.
11. Always take care when applying the layer of adhesive and tiles onto the mat to avoid de-bonding the mat.
12. Ensure you follow all required fixing instructions for the adhesive used and all applicable industry standards.

ARDEX INDORTEC FLEXBONE MATTING - VA

Advanced, high load-bearing uncoupling membrane for substrates with limited movement

PRODUCT INFORMATION

Composition: Waterproof unique bone shaped pattern with GripLock technology with a fleece on the underside.

Colour: Grey

Pack sizes: 20m rolls

Sheet Width: 1m

Sheet Thickness: 3mm

Sheet Weight: approx. 1.8kg / per sheet

Roll Weight: approx. 18kg

TECHNICAL ADVISORY SERVICE

For free expert guidance on use of this product, or any aspect of tiling, contact the ARDEX TECHNICAL ADVISORY AND SPECIFICATION SERVICE on Tel: 01440 714939 or 03330 030160 or Email: info@ardex.co.uk

SHELF LIFE

48 months under normal dry conditions. Protect from frost, damp and sunlight.

TEMPERATURE RESISTANCE

-30°C to 70°C **N.B** Tiling should
not be carried below 5°C

QUALITY AND ENVIRONMENTAL STANDARDS

Manufacturing quality assurance standards conform to BS EN ISO 9001. Satisfies the environmental management requirements and operational scope of ISO 14001.

CONDITIONS OF SALE

Sold subject to the Company's Conditions of Sale. Available on request.

For sales and technical queries, contact:

ARDEX UK LTD

Homefield Road, Haverhill, Suffolk, CB9 8QP

www.ardex.co.uk

Tel: +44 (0) 1440 714939

Email: info@ardex.co.uk

Ireland

Unit 622, Phase III

Northwest Business Park

Ballycoolin, Dublin 15, Ireland

Tel: +353 (0) 1 880 9210

Fax: +353 (0) 1 880 9211

NOTE: The information supplied in our literature or given by our employees is based upon extensive experience and, together with that supplied by our agents or distributors, is given in good faith in order to help you. Our Company policy is one of continuous Research and Development; we therefore reserve the right to update this information at any time without prior notice. We also guarantee the consistent high quality of our products; however, as we have no control over site conditions or the execution of the work, we accept no liability for any loss or damage which may arise as a result thereof.

Country specific recommendations, depending on local standards, codes of practice, building regulations or industry guidelines, may affect specific installation recommendations.

TECHNICAL ADVICE HELPLINE:

01440 714939

ARDEX online: www.ardex.co.uk