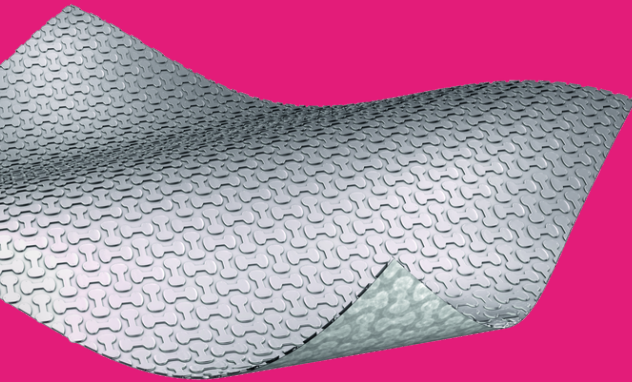


NEW



ARDEX IndorTec Flexbone Matting Systems

Uncoupling solutions for problematic floors

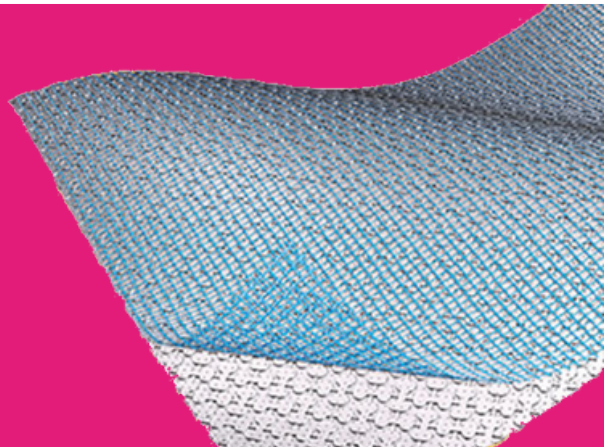


IndorTec Flexbone VA

High load-bearing
uncoupling mat for
highly trafficked areas

IndorTec Flexbone 2E

Unique unbonded
uncoupling mat for
unprepared screeds



ARDEX IndorTec Flexbone VA is a fixed high-load uncoupling membrane for substrates with limited movement

- A fast-track solution for heavily trafficked areas
- Waterproof with no additional tanking required
- Unique bone-shaped cavities with GripLock technology for high shear strength - 50% better than other cavity mats
- Special fleece provides for vapour pressure compensation
- Easy-to-fill cavities - circa 30% faster application than other cavity mat systems
- Protects floor tiles from lateral movement
- Heated screeds, new cement screeds, timber floors and existing floor surfaces

Saving time and money compared to other cavity mat system, ARDEX IndorTec Flexbone VA is a trusted solution from the ARDEX Group. Perfect for high load bearing commercial projects such as shopping malls, airports, car showrooms, office buildings and airports.

Roll length: 20m

Roll width: 1m

Sheet thickness: 3mm

Substrates: timber floors, heated floors, existing load-bearing surfaces, concrete, screeds

Tiles: Ceramic, porcelain, natural stone, minimum edge length 100mm



ARDEX IndorTec Flexbone 2E is a loose-laid uncoupling membrane.

- Truly 100% uncoupled - meaning significant time and cost savings
- Minimal substrate preparation required - no need to remove laitance, bitumen or adhesive residue.
- Unique bone-shaped cavities with GripLock technology for high shear strength
- Can be used over uncured screeds - new cement:sand screeds (when walkable), anhydrite screeds at 1.5% CM (usually 0.5% CM).
- Ideal for frequently changed floors - such as offices or shops
- Can be used when you need to protect the integrity of the subfloor - such as heritage floors

Perfect for light commercial and domestic projects, ARDEX IndorTec Flexbone 2E a game-changing uncoupling system saving you time and money. Save a massive 2kg/m² on adhesive compared to bonded mats, plus save on primer and preparation tools and products



Roll length: 20m

Roll width: 1m plus 50mm overlap

Sheet thickness: 3mm

Substrates: timber floors, heated floors, existing load-bearing surfaces, concrete, screeds, bitumen, contaminated screeds

Tiles: Ceramic, porcelain, natural stone, minimum edge length 200,mm

IndorTec Flexbone VA - Installation Guide



Roll out the mat



Air for 5 minutes then lay the mat down



Cut to size



Remove any airpockets



Apply ARDEX AF 200 Plus uncoupling mat adhesive

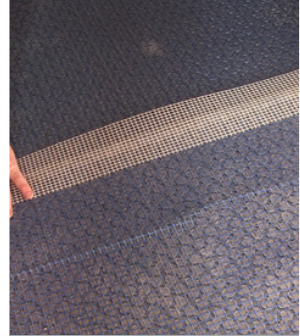


Tile immediately with an appropriate ARDEX tile adhesive

IndorTec Flexbone 2E - Installation Guide



Ensure the floor is flat and free from dust



Secure roll ends with AquaDrain SK 10 tape



Roll out the mat, securing edges with the blue mesh



Follow any movement joints through the mat and secure with self-adhesive tape



Cut mat to size using scissors



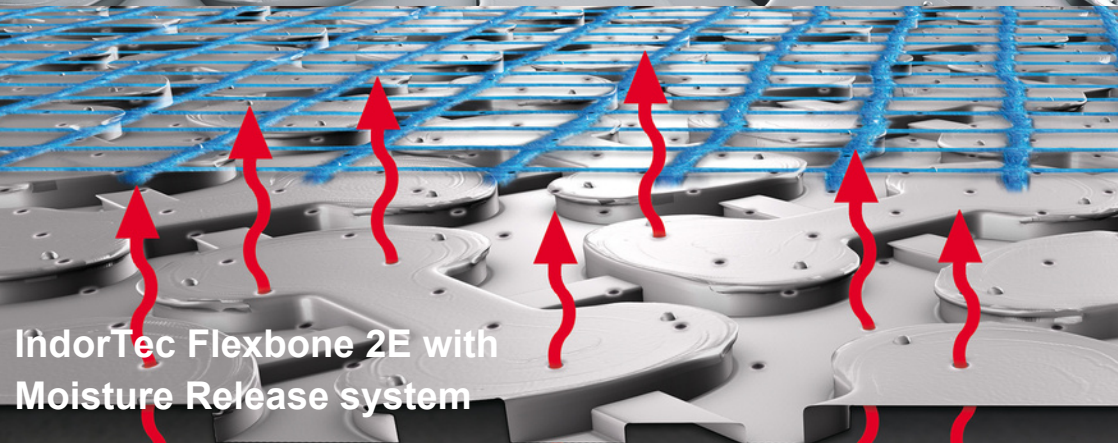
Tile immediately with an appropriate ARDEX tile adhesive

ARDEX IndorTec Flexbone

Uncoupling solutions for
problematic floors



IndorTec Flexbone VA with
GripLock Technology



IndorTec Flexbone 2E with
Moisture Release system

ARDEX UK Limited
01440 714939



www.ardex.co.uk
info@ardex.co.uk