

### STEP THREE – COAT 1

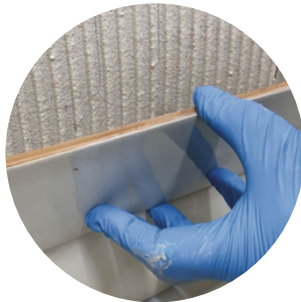
Using 1 part WPC Liquid: 1 part WPC Powder by weight mix to a flowing, lump free consistency. This mix should be used to give a complete coating on the surface, applying it evenly with a paint brush or roller and working the material well into the corners with a brush to a minimum wet thickness of 0.7mm.

Now immediately apply ancillaries to the first waterproofing layer and press down tightly with a smoothing trowel or spatula, while the coating is still wet.

At the edges, the sealing strip, corners and seals must overlap by at least 5 cm or be covered by the sealing compound used in each case. After the incorporation of all parts of the waterproofing reinforcement, the application of the second layer of the selected waterproofing product can begin. This coat should be applied at a right angle to the first coat.

### STEP THREE – COAT 2

To obtain a effective waterproof protection layer a second coat will be necessary and the total final dry film thickness should be at least 1mm. The second coat of the mix can be applied approximately 30 minutes after the first coat.



### STEP FOUR – TILING

After a minimum of 90 minutes @ 20°C tiles must be fixed with the ARDEX EAD approved system with cement-based adhesives ARDEX X 7 G, ARDEX X77 and ARDEX X78. Grout using a suitable ARDEX grout such as ARDEX FLEX FS or ARDEX FLEX FL. Refer to the relevant ARDEX Technical Data Sheet. For the latest and full details on any ARDEX product, refer to the products Technical Data Sheet.

For full product information scan here:



## ARDEX WPC

Create a protective waterproof coating and tile in just 90 minutes.

With EAD certification – perfect where needed for new NHBC housebuilding regulations.



*Building tomorrow*

01440 714939 | [ardex.co.uk](http://ardex.co.uk)

ARDEX UK

Homefield Road, Haverhill, Suffolk CB9 8QP  
Tel +44 (0) 1440 714939 Email: [info@ardex.co.uk](mailto:info@ardex.co.uk)



*Building tomorrow*

## Waterproof Wet Areas with ARDEX WPC

Rapid-Dry Waterproof Protection System



ETA-15/0458  
Compliant with NHBC requirements for tanking





**ARDEX WPC** is a flexible, rapid-drying waterproof coating for internal wet areas – preventing water penetrating through the tiling background, which could otherwise result in costly water damage to walls, floors and ceilings in adjacent rooms.

- ✓ Protects moisture sensitive backgrounds such as plasterboard from moisture ingress
- ✓ Ideal for use in commercial and domestic wetrooms, showers, bathrooms and kitchens
- ✓ **RAPIDRY Formula** allows tiling to commence after 90 minutes
- ✓ Quick and easy to apply with a roller, paint brush or trowel
- ✓ **FREE** roller & scrim tape in every box
- ✓ Adjustable mix consistency suitable for filling holes and gaps, as well as for general application
- ✓ Suitable for wall and floor applications
- ✓ Suitable for internal areas



## Standard application guidance

Application for domestic refurbs (or new builds not requiring NHBC certification) or commercial showers.

Ensure you have the appropriate tools and sufficient **ARDEX WPC** to cover the intended area. The surface to be tiled must be dry, rigid, of sufficient strength and free from dust, grease and dirt. Apply at temperatures above 5°C.

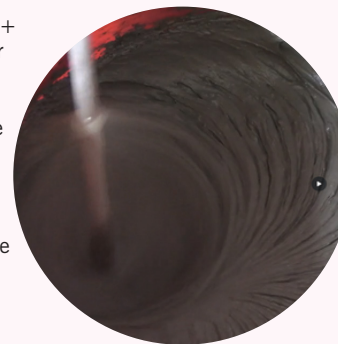


**1. MIX ONE** – Approximately 1.75kg of ARDEX WPC Liquid + 2.5kg of ARDEX WPC Powder per m<sup>2</sup> at 3mm thickness. Mix a small amount of ARDEX WPC to a slump-free consistency to fill any holes, gaps and joints.

**2.** Joints should be reinforced with the supplied ARDEX Self Adhesive Mesh Scrim prior to applying MIX ONE. Apply MIX ONE with a spatula, pallet knife or trowel, sealing joints in corners and filling holes and gaps around pipes.

**3. MIX TWO** – Approximately 0.75kg of ARDEX WPC Liquid + 0.75kg of ARDEX WPC Powder per m<sup>2</sup> at 0.8mm thickness. MIX ONE should be left to dry for approximately 1 hour before applying MIX TWO.

**4.** Apply MIX TWO evenly with a brush or paint roller to cover the entire surface with a uniform coat. A second coat should be applied approximately 30 minutes after the first coat to obtain an effective waterproofing layer at least 0.8mm thick.



**5.** Tiles can then be fixed using any ARDEX Cement-Based Tile Adhesive, approximately 60 minutes after the application of the second coat of MIX TWO.

## Application for domestic new builds\*

\*to provide an EAD certified system for NHBC compliant new build domestic showers and wet rooms.



ETA-15/0458  
Compliant with NHBC requirements for tanking

## FLOOR AND WALL APPLICATION

**Note:** When applying ARDEX WPC onto EAD systems please use the ancillaries listed within this document and not the scrim tape that is provided within the kit.

### STEP ONE – MIXING

To fill voids, follow the ARDEX WPC TDS and refer to guidance on mixing a slump-free, trowelable paste. With a spatula, pallet knife or trowel use the mix to seal joints in corners and fill gaps around fixtures and pipes.

The working time of ARDEX WPC is approximately 45 minutes @ 20°C.

### STEP TWO – MEASURE AND CUT TAPES/MATTING

Prior to coating the ARDEX WPC it is our advice that the required tapes/mat ancillaries are prepared in advance to ensure that mix does not go off.

Cut and prepare the ARDEX SK 12 Tricom Tape to length. SK 12 is used to bridge joints between floor and wall, and corners between walls. SK 12 may also be used to bridge cracks and joints.

Cut and prepare ARDEX STD Matting for use as reinforcement around drain and large pipe penetrations as well as smaller pipes.

ARDEX SRM 12/22 Tape is then used for reinforcement around pipes for sealing penetrations with a diameter of 12-22mm and can be used as an alternative to ARDEX STD only around pipes of this stated diameter.

\*Once ancillaries are cut, keep them to one side. They are then applied to the first waterproofing layer immediately after its application and pressed down tightly with a smoothing trowel or spatula, while the coating is still wet.



Continued



ardex.co.uk